

The Incidence of Land Use Regulations

Camilo Acosta*

April 1, 2022

Abstract

I study the welfare consequences of land use regulations for low- and high-skilled workers within a city. I use detailed geographic data for Cook County and Chicago in 2015-2016, together with a spatial quantitative model with two types of workers and real estate developers who face regulations. For identification, I use the 1923 Zoning Ordinance, which was the first comprehensive ordinance in Chicago. Results suggest that more mixed-use zoning and looser floor-to-area limits lead to cheaper housing and higher wages. Counterfactuals suggest significant welfare gains of relaxing regulations in areas where it is more stringent, relative to areas where are less tight, specially for high-skilled residents due to gains in residential market access.

JEL: O18, R14, R23, R31, R54.

Keywords: zoning, FAR, skills, welfare, inequality.

*School of Economics and Finance, Universidad EAFIT. Email: cacosta7@eafit.edu.co. Carrera 49 No. 7 sur 50, Oficina 26-208, Medellín, Colombia.

I am thankful to Nate Baum-Snow, Kristian Behrens, Rolando Campusano, Ramin Forouzandeh, Salim Furth, Ruben Gaetani, Stephan Heblich, Ig Horstmann, Asad Khan, Andrii Parkhomenko, Swapnika Rachapalli, Will Strange, as well as a number of participants at the 2020 Virtual UEA Meetings, University of Toronto Urban Economics Seminars, 2021 Virtual AREUEA, ICESI, Banco de la República, and the Edmonton Zoning Bylaw Team for helpful discussions and comments. I am also grateful with Allison Shertzer and Tate Twinam for sharing the shapefiles containing the information of the 1923 Chicago Zoning Ordinance and neighborhood characteristics.

1 Introduction

Regulations on the use of land are prevalent in almost every city in the modern world, and their effects on housing prices (e.g., Glaeser et al. (2005)), housing supply (e.g., Saiz (2010)) and other local outcomes (e.g., Saks (2008); Shertzer et al. (2018)) have been widely studied in the literature.¹ Most of this research follows a reduced-form analysis and does not consider the general equilibrium and welfare effects of land use regulations (LUR). These effects are relevant since LUR potentially affects wages, amenities and household location choices through their effects on the residential and commercial real estate markets. On the other hand, recent research by Allen et al. (2015) study the general equilibrium and welfare effects of zoning, but does not provide well-identified treatment effects and does not consider the distributional effects of these policies .

In this paper, I investigate the general equilibrium and distributional effects of zoning and floor-to-area (FAR) restrictions within a city. In particular, I use a spatial quantitative model of a city, together with well-identified reduced form estimates, to study the effects of these policies on real estate prices, location choices and wages of low- and high-skilled workers, amenities, productivity, land prices and welfare by skill type. Zoning and FAR restrictions are among the most popular tools used by city governments to organize land use and economic activity. Specifically, zoning specifies the permitted uses or activities inside a location, while FAR specifies the scale and volume of these activities and is regarded as a good predictor for permitted building heights.

Among other results, I find that an increase of 10 percentage points in the share of residential zoning in a block group leads to a 1.8% increase in housing prices, a 4.1% and 4.9% decrease in the wages of high-skilled and low-skilled workers, respectively, and a 3.1% decrease in local productivity. On the other hand, an equivalent increase in the share of mixed-use designations leads to a decrease of 6.7% in housing prices, a lower concentration of high-skilled residents, a 4.7% and 5.1% increase in the wages of high-skilled and low-skilled workers, respectively, and a similar increase in local productivity. Relaxing FAR limits in a location leads to lower housing prices and amenities, higher wages and productivity, and a higher concentration of low-skill workers.

¹I am not aware of any large city without land use regulations. Even Houston, which is well-known for not having a comprehensive Zoning Ordinance, uses other tools, such as restrictive covenants and deed restrictions (Siegan, 1970).

Since zoning and FAR restrictions affect sorting patterns and skill-specific wages, my findings highlight the importance of including worker heterogeneity when studying the effects of LUR. In this paper, I focus on the distinction between high- and low-skilled workers, which differ in at least three dimensions. First, there are significant differences in real wages between both skill types within and across urban areas (Baum-Snow and Pavan, 2013; Moretti, 2013). Second, low-income households spend a higher share of their income on housing (Notowidigdo, 2019). Since low-skilled workers are more likely to earn low wages relative to high-skilled workers (Mincer, 1974), higher housing expenditure shares make them more susceptible to changes in housing prices. Third, high-income workers have a higher opportunity cost of commuting time (Wheaton, 1977). These differences affect the location choices of both types of workers and how they react to changes in LUR.

To study these issues, I collect detailed geographic data for Cook County and the City of Chicago for 2015-2016. These data include the universe of real estate transactions from Zillow (2017) and the geographic distribution of zoning districts within Chicago. Using these data, I build residential and commercial real estate price indices and different measures of LUR at the Census block group level. I complement these data with data containing commuting flows and counts of people by education category at the block level, and with Cook County's Land Use Inventory CMAP (2016). The real estate data show that residential and commercial prices are significantly different in more than 90% of the block groups in the city. These price gaps indicate the existence of inefficiencies in the real estate market and a potential welfare-improving role of changes in the zoning ordinance.

Identification of causal effects of LUR is cumbersome given the endogeneity of zoning and FAR regulations. For instance, low-density zoning is more likely to happen in neighborhoods with a larger share of high-income population (Fischel, 2001), with more desirable amenities (Hilber and Robert-Nicoud, 2013), or facing a lower demand for floor space (Wallace, 1988). I tackle these issues using an instrumental variables approach, in which I instrument current regulations with the 1923 Chicago Zoning Ordinance. This ordinance was the first comprehensive zoning ordinance adopted in Chicago. In particular, Shertzer et al. (2018) show that the 1923 Zoning Ordinance is a good predictor of current zoning and current land uses. Following Shertzer et al. (2016a), who show that 1923 neighborhood demographic and geographic characteristic had an effect on the initial zoning ordinance, I include in my analysis a large set of historical covariates.

Afterward, I present a quantitative model of a city that builds on Ahlfeldt et al. (2015). Contrary to their model, I introduce two types of workers: low- and high-skilled, who differ in their income and housing expenditures. The inclusion of worker heterogeneity is important as one of the goals of this paper is to study the effects of LUR on welfare inequality. Moreover, in the spirit of Muth (1969) and Fujita and Ogawa (1982), my model includes the microfoundations of a real estate market in which developers supply both residential and commercial floor space subject to zoning and FAR restrictions. The inclusion of developers and LUR into a spatial quantitative model constitutes an important contribution of my paper. From the model, changes in welfare given by a change in LUR can be decomposed as the sum of four effects: (i) changes in housing prices, (ii) changes in skill-specific amenities coming from sorting, (iii) changes in wages and market access, and (iv) changes in the income coming from the rents of land.

Using this model, I follow the methodologies proposed by Ahlfeldt et al. (2015) and Tsivanidis (2019) to recover block group measures of wages, amenities and productivity, given observed data and values for the model's parameters. Moreover, I lay out a solution for the equilibrium of the real estate market. The proposed solution lets me recover land prices and the shadow price of FAR regulations at the block group level. After recovering these unobservables, I study how zoning and FAR restrictions affect them. Following the instrumental variables approach, I find that tighter regulations in a block group lead to lower local wages, as previously mentioned. These lower wages are compensated by increases in amenities. In particular, local amenities increase by around 4% with either a 10 pp increase in the share of land zoned for residential-only or a decrease of one in the allowed FAR. However, these policies also have a significantly negative effect on local productivity of 5% and 18%, respectively.

Finally, counterfactual exercises suggest an important role of changes in the zoning code for improving welfare. In particular, I simulate the effects of two policies, in which I allow an increase of one in the allowed FAR in either (i) those block groups where regulations bind the most, or (ii) in those groups where regulations are less binding. These two simulations show that welfare gains are significantly higher if LUR are relaxed in locations where it is more stringent. In particular, the first policy could lead to welfare increases of 12.3% for low-skilled and 28.2% for high-skilled residents, hence, increasing welfare inequality. For both types of workers, increases in residential

market access and land income are the main forces behind these effects.

This paper is related to the literature studying the effects of LUR.² Theoretically, Helsley and Strange (1995) and Rossi-Hansberg (2004) explore some welfare effects of LUR. Empirically, most of the literature agrees that LUR leads to i) higher land and housing values, and to a more inelastic supply of floor space (Mayer and Somerville, 2000; McMillen and McDonald, 2002; Glaeser et al., 2005; Glaeser and Ward, 2009); and ii) to decreases in total welfare, with potentially large distributional impacts (Cheshire and Sheppard, 2002; Turner et al., 2014; Hsieh and Moretti, 2015). My paper also relates to research studying zoning in Chicago and the 1923 Zoning Ordinance (McMillen and McDonald, 2002; Zhou et al., 2008; Shertzer et al., 2016a, 2018). In particular, Shertzer et al. (2018) conclude that zoning in Chicago has been more important than geography or transportation networks determining the distribution of economic activity. My paper contributes to this literature by providing a general equilibrium evaluation of LUR. Specifically, by studying the effects of zoning and FAR on a wide range of outcomes—i.e., housing and land prices, wages, productivity, sorting and welfare—, I include in one single framework the effects of these policies.

This paper also relates to the articles that explore heterogeneous effects of LUR. In particular, Kahn et al. (2010) and Levine (1999) find that areas with more low-density zoning experience more gentrification, affecting mostly minorities and low-income households. Muehlegger and Shoag (2015) show that tighter LUR are associated with increases in commuting time, especially for more educated and wealthier individuals. Ganong and Shoag (2017) find that stringent LUR in productive cities has caused a decrease in the returns to living in these cities for low-skilled people, but have remained constant for high-skilled. My paper contributes to this literature in three ways. First, by analyzing the impact of LUR on the distribution of skills across locations within a city. Second, by disentangling the effects that zoning and FAR restrictions have on wages and welfare by skill type. Third, by contributing to the debate on whether zoning is a regressive measure, benefiting high-skilled people more.

Furthermore, my paper is part of a recent literature using quantitative models in urban economics such as Ahlfeldt et al. (2015); Allen et al. (2015); Tsivanidis (2019); Baum-Snow and Han

²Fischel (2015) and Gyourko and Molloy (2015) provide superb summaries about the recent state of the literature.

(2019), among others. There are three important departures of my model with respect to the standard models. First, similar to Tsivanidis (2019), my model includes worker heterogeneity, which is important given the potential distributional impacts of LUR. Second, my model includes micro-foundations for the supply of real estate supply into this quantitative setting.³ Third, I decompose changes in welfare in changes in rent, wages, sorting and income from land rents, to study the specific mechanisms through which LUR affects residents.

The paper proceeds as follows. In Section 2, I describe my data sources. In Section 3, I briefly discuss the 1923 Zoning Ordinance and study the relationship between LUR, real estate prices and sorting by skill. Section 4 presents the quantitative model with heterogeneous workers and LUR. Section 5 exploits the recursive structure of the model in order to solve the model, given some data and values for different parameters. In Section 6, I explore the effect of zoning and FAR restrictions on wages, amenities, productivity, and land prices. In this section, I also present the policy counterfactuals that show how changes in LUR can lead to reductions in welfare inequality. The final section concludes and highlights directions for future research.

2 Data and Descriptive Statistics

In order to investigate the effects of zoning and FAR restrictions on real estate prices, sorting and wages across locations, I combine data from five sources. First, data on workplace and residence area characteristics from the US Census Bureau. Second, data from Zillow Economic Research containing the universe of real estate transactions. The LODES and Zillow data are available for any city in the country. The main challenge constitutes finding a city with detailed data on LUR. Fortunately, the Data Portal of the City of Chicago contains a database with all the zoning districts within city boundaries, which I complement with a Land Use Inventory for the rest of Cook County.⁴ Finally, I use historical zoning, demographic and geographic variables for Chicago

³In this regard, my paper relates to Khan (2021), who studies the political economy of LUR in Chicago using a spatial model of a city and shifts in Alderman-controlled Ward boundaries for identification.

⁴The Chicago Metropolitan Area is comprised of 14 counties, with Cook County containing two thirds of the total population. Moreover, half of the total commutes happen within this county. Even though, the ideal study would contain data on the whole area, zoning data for all these counties is not publicly available. Nonetheless, using data for the whole Cook County is an improvement over most of the current literature, which has focus mainly on what happens within the boundaries of the City of Chicago. See Allen et al. (2015) and ⁵ for two current examples.

in the 1920s, collected and studied by Shertzer et al. (2016a), Shertzer et al. (2016b) and Shertzer et al. (2018). In the rest of this section, I describe these data and present descriptive statistics.

2.1 Real Estate Prices

I use data of real estate prices and stocks from Zillow Economic Research for Cook County in 2015 and 2016. The Zillow ZTRAX data are constructed from information in local deed transfers and mortgages for mostly residential properties, but also include commercial properties in the more recent years.(Zillow, 2017).⁶ Among other variables, these data include sales price, transaction date and coordinates of the property. I merge this dataset with their assessment data, which include property characteristics, geographic information, current and prior valuations.

Using the ZTRAX transactions and assessment data, I build quality-adjusted residential and commercial real estate price indices for each census block group in Cook County for 2015-2016 using a hedonic regression approach.⁷ Further details regarding the construction of these indices can be found in Appendix A.1. Since these prices are identified up to scale, I normalize their geometric mean to 1. Figure A1 presents the distribution of real estate prices across block groups in Cook County, and Table A1 presents descriptive statistics. I also use the assessment data to measure the stock of residential and commercial floor space in each block group. Figure A2 shows that the block groups with the largest stock of residential space are located downtown and in the suburbs, while the stock of commercial real estate is concentrated downtown, along the main avenues and in the suburbs.

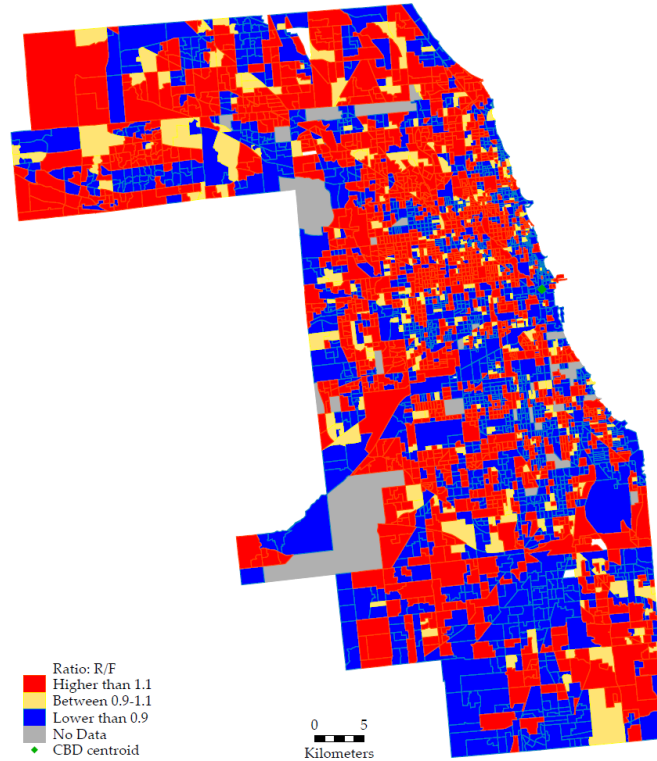
There is significant variation between residential and commercial real estate prices across locations. On average, residential real estate is more expensive than commercial, but 5.4% of the block groups have commercial real estate more expensive than any block group's housing. Moreover, the data show that residential prices are higher than commercial prices in around 45% of the block groups, commercial is more expensive than residential in 46%, and only in around 8% the ratio lies

⁶Data provided by Zillow through the Zillow Transaction and Assessment Dataset (ZTRAX). More information on accessing the data can be found at <http://www.zillow.com/ztrax>. The results and opinions are those of the author and do not reflect the position of Zillow Group.

⁷A block group is the US Census classification lying between a tract and a block. There are 809 tracts in Chicago containing on average 2.7 block groups, and there are 2,194 block groups containing on average 17 blocks.

between 0.9 and 1.1. The existence of these price gaps is interesting from a theoretical perspective since canonical models of real estate supply suggest that developers provide both residential and commercial floor space until their price equalize. Therefore, these gaps indicate the existence of inefficiencies in the real estate market, and a potential role for changes in LUR to solve them. Figure 1 shows the geographic distribution of such gaps.

Figure 1: Real Estate Price Gap (Residential/Commercial)–Cook County, 2015-2016



This figure shows the ratio between residential and commercial real estate price indices for every block group in Cook County for 2015-2016. These prices are estimated using a hedonic regression approach for both types of properties, separately, and an inverse distance weighted interpolation for those locations without enough observations. Red block groups are those where residential prices are at least 10% higher than commercial prices. Blue block groups are those where commercial prices are at least 10% higher than residential prices. Yellow block groups are those where prices are in the interval between the previous categories. Green dot represents Chicago’s CBD.

2.2 Land Use Regulations

The data on land use and its regulations comes from two sources. First, from the Data Portal of the City of Chicago, which contains a geographic database of all the zoning districts within city boundaries. Second, from the 2015 Land Use Inventory for Cook County, which is built and published by

the Chicago Metropolitan Agency for Planning (CMAP). The zoning data contain the polygons for specific zone class categories in 2016. In total, there are 66 zone classes, 15 Planned Manufacturing Developments (PMD) and more than a thousand Planned Developments (PD) within the city. Out of the total land area in Chicago, around 52% is currently categorized as residential (R), while manufacturing (M), commercial (C) and business (B) districts use approximately 11%, 3% and 7%, respectively. Locations categorized as downtown districts (D) use about 1% of the area.⁸ PMD and PD cover 6% and 12%, respectively. Further details of this database can be found in Appendix A.2.

I group all districts into three categories: those designated for residential purposes only, for commercial only and for mixed-uses. I also categorize each Planned Development into a category based on their characteristics.⁹ In the left panel of Figure 2, I present a map of Chicago using this categorization. The land that can be used by firms only (red) is spread along and around the main highways and waterways, while mixed-use areas (purple) are located mainly downtown and along the main streets. Areas designated for residential purposes only (blue) are located mainly in neighborhoods surrounded by mixed-use areas. In the right panel, I map the maximum FAR allowed in each zoning district. High density (red and pink) is allowed mostly downtown and in some parts of the coast; medium density (greens) is allowed along the coast of Lake Michigan and in the areas where only commercial uses are allowed; low density (blues) is allowed particularly in residential zoned areas.¹⁰ Using these maps, I build block group measures of the share of land designated for residential, mixed-uses or commercial purposes, and the average allowed FAR. I also build a measure of the share of residential floor space allowed in each block group.¹¹

The zoning data is only available for the City of Chicago, which contains around 35% of the residents of its metropolitan area. Ignoring land uses outside the city might render an incomplete

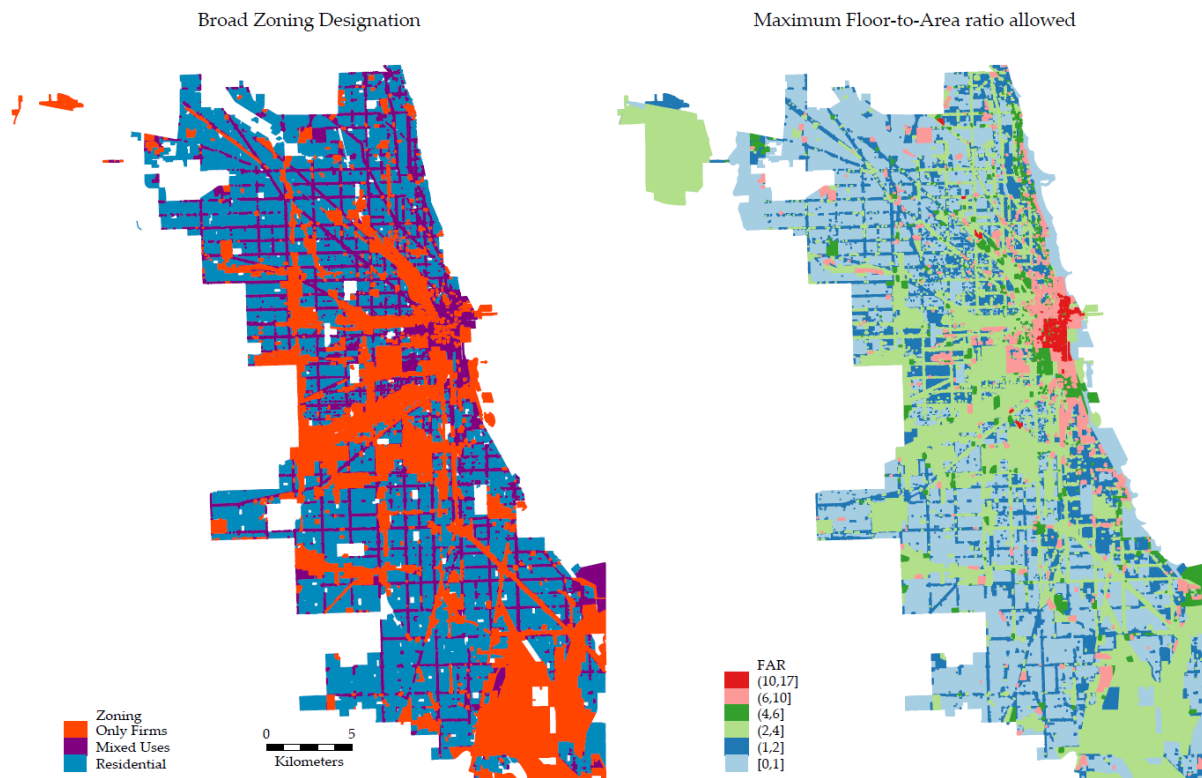
⁸Downtown districts can be Residential (DR), Core (DC), Service (DS) or Mixed-Use (DX) districts. The detailed specifications of each zone class are available in the Chicago Zoning and Land Use Ordinances (City of Chicago, 2019).

⁹Planned Developments correspond to tall buildings and other large developments in which developers must work with the City to ensure that the project integrates with surrounding neighborhoods (2nd City Zoning, nd). The City of Chicago keeps pdf files for each Planned Development in <https://gisapps.chicago.gov/gisimages/zoning/pds>.

¹⁰In Figure A3, I present a map of the distribution of all nine broad zoning designations.

¹¹This measure, will be denoted as λ is used for solving the model as it captures the share of floor space in mixed-use districts that can be used for housing. For example, **B3-3** zoning districts have an allowed FAR of 3, with apartments only permitted above the ground floor. In this case, I assume that the first floor is used for commercial purposes, while the two remaining floors are used for residential purposes. Hence, I set $\lambda = 2/3$. Moreover, $\lambda = 1$ for residential-only districts, and $\lambda = 0$ for commercial-only districts.

Figure 2: Land Use Regulations in Chicago



Notes: This figure shows two current land use regulations in the City of Chicago. The left map presents the areas where only commercial (red), residential (blue) or mixed-uses (purple) are allowed. The right panel shows the maximum FAR allowed in each zoning district, where reds denote high allowed density, greens denote medium allowed density, and blues denote low allowed density.

picture of the effects of LUR on the distribution of economic activity in this labor market. For this reason, I include data on the use of land in the rest of Cook County from the 2015 Land Use Inventory. This inventory contains the specific uses of land in all Northeastern Illinois and is built to develop long-range population and employment forecasts for the Chicago Metropolitan Agency (CMAA, 2016). Using these data, I build measures of the share of land area used for residential, mixed-uses or commercial purposes in each block group outside the City.

In Table 1, I present descriptive statistics of the different measures of zoning across block groups in Cook County. The average block group has 75% of its land zoned for residential purposes, 15% for commercial purposes and 10% for mixed-uses. The average allowed FAR is 1.8. Furthermore, out of the 10% zoned for mixed-uses, around 77% of it can be used for housing. Compared to the

average, the median block group is more residential and has lower FAR. In fact, 75% of the block groups in the city have an average allowed FAR of less than two.

Table 1: Descriptive Statistics - Zoning Measures

	Mean	SD	Min	p25	p50	p75	max
Sh. Res. Only	0.75	0.24	0	0.66	0.83	0.93	1
Sh. Mixed-uses	0.10	0.15	0	0	0.02	0.14	1
Sh. Firm Only	0.15	0.21	0	0	0.06	0.21	1
Mean FAR	1.82	1.60	0.5	0.94	1.24	2.01	14.2
Sh. Res. Space Allowed	0.77	0.22	0	0.70	0.85	0.92	1

Notes: This table shows descriptive statistics for different measures of land use regulations across block groups for Cook County in 2016.

For my empirical strategy, I also use the 1923 Zoning Ordinance together with a large set of demographic and geographic characteristics from the early 1920's. The 1923 zoning data was digitized by Allison Shertzer, Tate Twinam and Randall Walsh, who provided me with the shapefiles containing the four use-districts and the five volume-districts used in this ordinance. I provide further details of this Ordinance in Section 3.1. Moreover, I use different demographic and geographic data from the 1920 census, which is provided in the supplementary material from Shertzer et al. (2016a). The authors collect these data at the enumeration district level from a variety of sources, including Ancestry.com, National Archives and the 1922 Chicago Land Use Survey.

2.3 Distribution of Skills and Commuting

For data on population by workplace and residential areas, I use version 7.2 of the US Census Bureau Longitudinal Employer-Household Dynamics (LEHD) Origin-Destination Employment Statistics (LODES) for 2015 and 2016. The LODES data contain information about the location of jobs and residences as provided by state unemployment insurance and federal worker earning records. These data contain counts of the people living and working in each census block. This information can be further split by earnings categories, educational attainment or racial composition. The LODES data also contain the number of commuters between every pair of blocks, which can only be separated by age and earnings categories. I complement these data with bilateral distances and travel times between block group pairs calculated using an Open Source Routing Machine method

(Huber and Rust, 2016).

Out of the total working population of age 30 or older in Cook County in 2015-2016, 14% had less than a high school degree, 23% had a high school degree only, 30% had a college or an associate degree, and 33% had a bachelors or an advanced degree. I categorize as low-skilled those workers within the first two categories. Table A2 presents the number of residents and workers by education category in the mean and median block group. These statistics show that the distribution of workers across block groups is more skewed than the distribution of residents. Figure A4 presents the share of high-skilled people for every block group of residence and of work in the county. These maps show a high concentration of high-skilled residents, especially in the downtown area and north of it. Low-skilled residents are concentrated in the south and west portions of the county.

3 Land Use Regulations, Prices and the Distribution of Skills

In this section, I explore the effects of zoning and FAR restrictions on the distribution of real estate prices, wages and people by skill across block groups. Real estate prices and wages are relevant outcomes since they affect households' expenditures and income, and potentially welfare. In addition, the distribution of people by skill across locations is relevant as local amenities and productivity tend to respond positively to higher population density. Moreover, if each block group is considered to be a small open economy, the spatial concentration of residents could be a rough measure of local welfare. In order to identify the effects of current regulations, I use the 1923 Chicago Zoning Ordinance, together with an instrumental variables approach. I start by briefly describing this ordinance, but the reader should refer to Shertzer et al. (2016a) and Shertzer et al. (2018) for more detailed information.

3.1 The 1923 Chicago Zoning Ordinance

There are at least three threats to causal identification of the effects of land use regulations on the spatial distribution of economic activity. First, low-density zoning is more likely in neighborhoods with a larger share of high-income population. Since richer households are more likely to own

properties, if LUR leads to higher housing prices owners may want to strengthen the regulations to increase the value of their homes. This phenomenon is known as the Homevoter Hypothesis (Fischel, 2001; Parkhomenko, 2020). Second, locations with more desirable amenities (such as parks, lakes or historical buildings) might have tighter LUR to prevent developments around these areas (Hilber and Robert-Nicoud, 2013). Third, changes in zoning could be caused by changes in the demand for certain locations (Wallace, 1988).

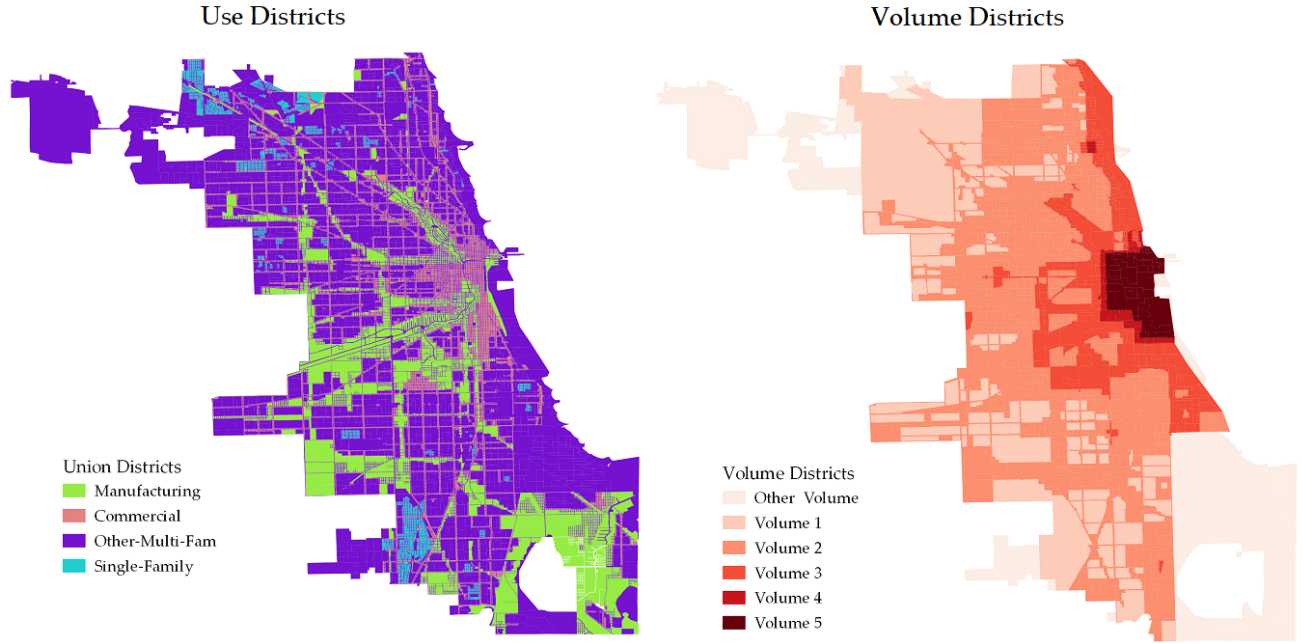
I tackle these issues by instrumenting current LUR using the 1923 Chicago zoning ordinance, which was the first comprehensive zoning ordinance adopted in Chicago. Even though Chicago’s city government had made previous attempts to control undesirable land uses, these approaches were insufficient to meet public demand in a constantly growing city. Therefore, in 1921 the local government created a Zoning Commission, which spent 18 months surveying existing land uses and organizing public hearings, until the final ordinance was adopted in 1923. The ordinance regulated land by restricting allowed uses and building volumes: it included four use districts (single-family residential, multi-family residential, commercial and manufacturing), and five volume districts, that imposed restrictions on height and lot coverage.¹² Figure 3 shows the distribution of use and volume districts according to the 1923 zoning ordinance, which, according to Shertzer et al. (2018), are a good predictor of current LUR.

A potential violation of the exclusion restriction is that initial zoning could be correlated with local characteristics that show path dependence, hence influencing contemporaneous outcomes of interest. For instance, while the initial zoning ordinance could have been determined by the income and racial composition of neighborhoods in the 1920s, these outcomes may also influence income and racial composition of modern neighborhoods, and other relevant variables, such as current housing prices or the spatial distribution skills. To address this concern, I include in the estimations the set of neighborhood demographic and land use characteristics from 1922 used in Shertzer et al. (2016a).¹³

¹²Use districts were hierarchical, which means that multi-family districts allowed single-family residences, commercial districts allowed multi- and single-family residences, and manufacturing districts allowed any use.

¹³These controls are: percentage of northern- or southern-born black population; percentage of first- or second generation immigrants; population density; maids per household; indicator for presence and distance to a major street, coast, main or ancillary railroads, and Union Stockyards; number of warehouses; indicator and density of commercial uses, manufacturing uses, 4,...,10,11-25 story buildings; number of manufacturing uses within 500ft and between 500ft and 1000ft; indicator for alderman living in district; 1913 land values.

Figure 3: 1923 Chicago Zoning Ordinance



Notes: This figure the distribution of use and volumn districts given by the 1923 Chicago Zoning Ordinance. The left map presents the four use districts: single-family residential, multi-family residential, commercial and manufacturing. The right map presents the five volume districts.

From the use and volume districts from the 1923 zoning ordinance, I build block group level measures of the share of each district. I use these shares as instruments for 2016 LUR to estimate the following first-stage specification:

$$LUR_{2016,i} = \pi Zoning_{1923,i} + \psi X_i + \epsilon_i \quad (1)$$

where $LUR_{2016,i}$ corresponds to one of the block group level measures of LUR in 2016 presented in Table 1; $Zoning_{1923,i}$ is a vector that includes the 1923 shares of land designated as manufacturing or commercial (single- and multi-family residential are the omitted categories), and as volume districts 1, 2 or 3 (volume districts 4 and 5 are the omitted categories); X_i is a vector of control variables at the block group level, which includes total land area, interactions between distance to the CBD and the closest body of water,¹⁴ a transit accessibility index,¹⁵ current local racial composition

¹⁴Including Lake Michigan, Chicago River (south and north branches), Des Plaines River, Little Calumet River, and a small number of large lakes within city boundaries.

¹⁵The raster map used to compute this index was provided by Tate Twinam, who obtained it from

measured as the share of non-white residents and the share of non-white workers, 1927-wards fixed effects, and the set of historical covariates. This large set of controls and fixed effects implies that I am comparing highly similar block groups inside 1927-wards, thus, I am using rather local variation to identify the causal effects of zoning and FAR restrictions.¹⁶ Finally, ϵ_i corresponds to the error term. All of the regressions include spatial heteroscedasticity and autocorrelation consistent (SHAC) standard errors (Conley, 1999).¹⁷

I present the estimation results from equation (1) in Table 2. Columns (1)-(2) use as dependent variables the share of land where only residential or mixed-uses are allowed. Results from these columns are similar to those from Table A.4 in Shertzer et al. (2018): block groups with a higher share of land designated for manufacturing and/or commercial purposes in the 1923 ordinance have a larger share of land zoned for residential-only uses in 2016, relative to similar and nearby block groups with a lower share of these designations. Moreover, these blocks have a higher share of land zoned for mixed-uses. Column (3) shows that block groups with a higher share of land designated for manufacturing and/or commercial purposes in the 1923 ordinance have high allowed FAR today. Regarding volume, a larger share of low volume districts in 1923 is associated with lower FAR limits in 2016, relative to block groups with a larger share of high volume districts in 1923.

3.2 LUR and the Real Estate Market

Using the previous identification strategy, I explore the effects of current regulations on the real estate market by estimating the following regression:

$$\ln(r_{Ti}) = \beta_1 LUR_{2016,i} + \psi_1 X_i + \epsilon_{1,i}, \quad (2)$$

www.walkscore.com.

¹⁶Historical demographic and economic characteristics are available for around 67% of the block groups within Chicago. Therefore, identification of my estimates come from the impact of these regulations in this portion of the city. Nonetheless, the quantitative exercises from Sections 5 and 6.4 use data for the entire county.

¹⁷Specifically, I use the routine developed by Hsiang (2010) with a linear Bartlett window. I calibrate the distance cutoff of the spatial kernel to 1.5 km based on results derived from bootstrapping the spatial correlation between residual real estate prices. I present these results in Figure A5 and show that the residual covariance between real estate prices is almost zero among block groups located 1.25 and 1.75km away, for residential and commercial real estate prices, respectively.

Table 2: First Stage Regressions: 2016 Zoning as a Function of 1923 Zoning

	(1)	(2)	(3)
1923 / 2016	Sh. Only Residential	Sh. Mixed Uses	Mean FAR
Share Commercial	-0.38*** (0.00)	0.39*** (0.00)	0.64*** (0.00)
Share Manufacture	-0.42*** (0.00)	0.05*** (0.00)	0.90*** (0.00)
Share Volume 1	-0.11*** (0.00)	0.11*** (0.00)	-1.98*** (0.00)
Share Volume 2	-0.14*** (0.00)	0.12*** (0.00)	-1.69*** (0.00)
Share Volume 3	-0.12*** (0.00)	0.07*** (0.00)	-1.12*** (0.00)
R-squared	0.96	0.81	0.94

Notes: This table shows the results of regressions of 2016 measures of land use regulations as function of the share of allowed uses and volumes given by the 1923 Chicago Zoning Ordinance. These measures are constructed at the block group level. Omitted 1923 zoning types are residential uses and volume districts 4 and 5. (1)-(2) correspond to the share of land in districts where only residences or mixed-uses are allowed, respectively. The share of land where only firms are allowed is the omitted category. (3) corresponds to the mean FAR. Regressions include controls for block group’s land area, distance to the CBD and to major waterways, transit access, current racial composition, and historical covariates. Number of block groups is 1,427. Spatial Heteroscedasticity and Autocorrelation Consistent (SHAC) standard errors in parentheses (Conley, 1999); *** p<0.01, ** p<0.05, * p<0.1.

where $\ln(r_{Ti})$ corresponds to the quality-adjusted price index for type T properties (residential or commercial) in block group i ; $LUR_{2016,i}$ corresponds to one of the measures for current LUR; X_i denotes the set of control variables described in equation (1); ε_{1i} is the error term. The OLS estimates from equation (2)—which are presented in Table A4—show a non-significant relationship between LUR and real estate prices. As discussed previously, these estimates could be biased since homeowners in locations with high housing prices may lobby for more stringent regulation to maintain high prices.

Therefore, I estimate equation (2) using two-stage least squares (2SLS), where the first stages are given by equation (1). Identification under this strategy requires that historical LUR only affect real estate prices through their impact on current LUR, once controlling for the set of historical and geographic characteristics. Ward fixed effects and controls imply that the estimates from my 2SLS regressions are identified using within-wards variation, comparing block groups that were similar

in terms of historic and current demographic and current geographic characteristics, but differ in their current regulations.¹⁸

Table 3 presents the results of these regressions. Estimates from Panel A suggest that block groups with a larger share of area designated for residential uses have higher residential prices and built area. In particular, an increase of 10 percentage points (pp) in the share of residential-only area (e.g., going from the median to the 75th percentile block group) leads to a 1.8% increase in the average price of housing, relative to block groups with more commercial-only designations. This increase also leads to a 6.3% increase in the price of commercial real estate. A similar increase in the share of mixed-use zoning leads to reductions of 6.7% in residential real estate prices and a modest increase of 1.1% in commercial prices. In Panel B, I show that a one-unit increase in the mean allowed FAR leads to a decrease of 5% in housing prices, but a 5% increase in the price for commercial real estate. The weak effect of more relaxed FAR on housing prices can be driven by two effects: an increase in the stock of floor space (as suggested by Column 2), together with a potential increase in population density, which could lead to more amenities. The positive effect for commercial prices could be driven by increases in productivity brought by a higher density of workers and businesses.

3.3 LUR and the Spatial Distribution of Skills

In this subsection, I explore the effects of current LUR on the distribution of high- and low-skilled workers within and across block groups. I do this by estimating the following regressions:

$$\ln(\text{Skills}_i) = \beta_2 \text{LUR}_{2016,i} + \psi_2 X_i + \varepsilon_{2,i}, \quad (3)$$

where Skills_i denotes one of the following measures of skill composition of block group i : (i) the share of high-skilled people (h_i) inside the block group ($h_i/(h_i + l_i)$), where l_i denotes the number of low-skilled people; (ii) the number of high-skilled people in the block group relative to the city total ($h_i/\sum_j h_j$), and (iii) the number of low-skilled people in a block group relative to the city total ($l_i/\sum_j l_j$). The first measure captures the skill composition of a given block group, while the

¹⁸On average, there are 44 block groups inside each ward.

Table 3: Effects of LUR on the Real Estate Market

Type	(1)	(2)	(3)	(4)
	Ln Price Residential	Ln Stock	Ln Price Commercial	Ln Stock
Panel A				
Sh. Res. Only	0.18*** (0.00)	1.21*** (0.00)	0.61*** (0.00)	-1.89*** (0.00)
Sh. Mixed-uses	-0.69*** (0.00)	0.73*** (0.00)	0.11*** (0.00)	12.37*** (0.00)
F-Test	11.33	11.15	13.84	11.15
Panel B				
Mean FAR	-0.05*** (0.00)	0.09*** (0.00)	0.05*** (0.00)	0.91*** (0.00)
F-Test	19.30	19.53	20.01	19.53
Observations	1,391	1,392	1,345	1,392

Notes: This table shows the results of 2SLS regressions of the effects of different LUR measures on prices and stock in the real estate market. The estimations use the 1923 zoning ordinance as instrument and include controls for block group's land area, distance to the CBD and to major waterways, transit access, current racial composition, and historical covariates. Price measures are quality adjusted (hedonic) and are defined in Section 2.1. Spatial Heteroscedasticity and Autocorrelation Consistent (SHAC) standard errors in parentheses (Conley, 1999); *** $p < 0.01$, ** $p < 0.05$, * $p < 0.1$.

latter two capture the spatial concentration of a particular skill type. I compute these measures for block groups of residence and work, separately, and present their respective regression results in Columns (1)-(3) and Columns (4)-(6) from Table 4.¹⁹

The results from Panel A suggest that a 10pp increase in the share of land zoned for residential-only uses leads to a small (but significant) increase of 0.1% in the share of high-skilled residents, relative to block groups with more land zone as commercial-only. Estimates in columns (2) and (3) suggest that more residential zoning also leads to more spatial concentration of both types of residents relative to every other block group in the city. On the other hand, a 10pp increase in the share of land zoned for mixed-uses in a block group, leads to a decrease of 1.2% in the share of high-skilled residents. This change in skill composition comes from an increase of 4.1% in the spatial concentration of low-skilled residents inside the block group, relative to an increase of 1.4%

¹⁹Not controlling for the endogeneity of LUR could also lead to biased coefficients in these regressions, since locations with a larger share of high-skilled and high-income residents may have more influential groups lobbying for more stringent regulation. Columns (5)-(10) from Table A4 confirms the existence of these biases.

in the spatial concentration of high-skilled residents. Columns (5) and (6) show that increases in mixed-use zoning lead to increases in the spatial concentration of both types of workers.

Regarding FAR, Panel B shows that a one-unit increase in the allowed FAR leads to spatial decentralization of residents and to a spatial concentration of workers, especially low-skilled. In particular, a one-unit increase in the allowed FAR leads to 71% and 83% increases in the relative spatial concentration of high-skilled and low-skilled workers, respectively. This result suggests that higher FAR is associated with more mixed-use or commercial zoning, relative to residential.

Table 4: Effects of LUR on the Distribution of Skills

Block Type	(1) Sh. High Skilled (w)	(2) Sh. Low Skilled (a) Residence	(3) Sh. High Skilled (a)	(4) Sh. High Skilled (w)	(5) Sh. Low Skilled (a) Work	(6) Sh. High Skilled (a)
Panel A						
Sh. Res Only	0.01*** (0.00)	0.69*** (0.00)	0.73*** (0.00)	0.13*** (0.00)	-2.10*** (0.00)	-1.53*** (0.00)
Sh. Mixed-uses	-0.12*** (0.00)	0.40*** (0.00)	0.14*** (0.00)	0.07*** (0.00)	1.88*** (0.00)	2.24*** (0.00)
F-Test	11.08	11.08	11.08	11.14	11.08	11.08
Panel B						
Mean FAR	0.00*** (0.00)	-0.10*** (0.00)	-0.09*** (0.00)	-0.04*** (0.00)	0.83*** (0.00)	0.71*** (0.00)
F-Test	19.98	19.98	19.98	20.64	19.98	19.98
Observations	1,394	1,394	1,394	1,385	1,394	1,394

Notes: This table shows the results of 2SLS regressions of the effects of different LUR measures on the spatial distribution of high- and low-skilled workers within and across block groups of residence (Columns 1-3) and work (4-6). The estimations use the 1923 zoning ordinance as instrument and include controls for block group's land area, distance to the CBD and to major waterways, transit access, current racial composition, and historical covariates. Dependent variables are in logs; (w) denotes the share within block group (e.g., high-skilled as proportion to the block group's population); (a) denotes the share across blocks (e.g., high-skilled in a block group relative to the total high-skilled in the city). Spatial Heteroscedasticity and Autocorrelation Consistent (SHAC) standard errors in parentheses (Conley, 1999); *** p<0.01, ** p<0.05, * p. <0.1.

The LODES data also contain information on the number of workers by skill type for three earnings categories. I define as high-wage those workers within the top category (more than than \$3333/month). Using these categories, I estimate the effect of current LUR on the share of low wage workers from each skill type. The results, which are presented in in A.3, suggest that a 10pp

increase in the share of residential zoning leads to an increase in the share of low-wage workers of 2.3% for low-skilled, and 5.8% for high-skilled. For a 10pp increase in the share of mixed-use land, the shares increase by 1.6% and 3.9%, respectively. The direction of these results will be corroborated using a model-based measure of wages in Section 6.

Recall from Table 3 that more stringent LUR lead to higher commercial real estate prices. These results together imply that, firms adjust to higher real estate prices by offering lower wages. Alternatively, these results could also suggest that low-wage firms (or sectors) sort into more residential areas, while high-wages firms into locations where taller buildings are allowed. I expand the analysis of the effect of LUR on wages in Section 6 using a model-recovered measure of wages.

4 A Quantitative Model of a City

The empirical results presented in Section 3 suggest that more residential zoning and tighter FAR limits in a location lead to higher housing prices and lower wages. Moreover, locations with a higher share of land zone for mixed-uses have cheaper housing and a larger concentration of low-skilled workers. In this section, I develop a spatial equilibrium model of a city, which will allow me to study the mechanisms driving the previous results and the effect of LUR in other unobserved outcomes, such as amenities, land prices, and welfare.

In this model, individuals—who are high- or low-skilled—choose where to live and work, and their consumption of goods and floor space. The inclusion of worker heterogeneity is important as one of the main goals of this paper is the study of the distributional effects of LUR. Both types differ in their total income and the fraction of it spent on housing. Firms choose the number of each type of workers and the amount of floor space for production. This part of the model builds mainly on Ahlfeldt et al. (2015), but also draws some elements from Diamond (2016) and Tsivanidis (2019). In a second part, I add microfoundations for the real estate market by modelling real estate developers who face LUR and choose the supply of real estate subject to these regulations.

Consider a closed city consisting of a set $\{1, 2, \dots, L\}$ of block groups, each with a total land area of L_i . The closed-city assumption implies that the city-wide population of each skill group is

exogenous, but the expected utility is endogenously determined. Block groups differ in terms of final good productivity, residential amenities and their access to the rest of the city. Throughout this section, residence locations are indexed with i or m , and work locations with j or n .

4.1 Individuals

There are two types of people: high- (s) and low-skilled (u) , with a fixed total population of N_s and N_u , respectively. Both types receive income from their labor and rents from land, which are paid to every individual in the city. Individuals are indexed by o and are endowed with one-unit of labor that is supplied inelastically. Every worker o of type $e \in \{s, u\}$ living in location i and working in location j faces a commuting cost $d_{ij} > 1$ and solves:

$$\max_{c_{io}, h_{Rio}} u_{ijeo} = B_{ei} \left(\frac{c_{io}}{\beta_e} \right)^{\beta_e} \left(\frac{h_{Rio}}{1 - \beta_e} \right)^{1 - \beta_e} v_{ieo} \quad (4)$$

$$\text{s.t.} \quad c_{io} + r_{Ri} h_{Rio} \leq y_{eij} = \frac{w_{ej}}{d_{ij}} \epsilon_{jeo} + \varphi_e,$$

where B_{ei} denotes skill-specific residential amenities and reflect the average preference of living in i by type e residents; h_{Rio} and c_{io} represent the amount of housing and final good demanded by worker o living in block group i . Commuting costs act as a dispersion force, reducing the productivity and wages at work. I assume these costs take an iceberg form $d_{ij} = e^{\kappa \tau_{ij}} \geq 1$, where $\tau_{ij} \in [0, \infty)$ represents travel time between two locations and κ represents the incidence of these commuting costs. In addition, individuals receive exogenous productivity shocks over workplace locations (ϵ_{jeo}) and exogenous preference shocks over residential locations (v_{ieo}), which differ by skill-type. Furthermore, I assume $\beta_s \geq \beta_u$ following recent literature showing that low-skilled spend a higher share of their income on housing relative to high-skilled people (Notowidigdo, 2019; Ganong and Shoag, 2017).

In the budget constraint, the price of consumption goods is the same across locations and is normalized to one; and r_{Ri} is the price of housing in location i . In this model, all land is owned by people. Therefore, total income comes from their commuting-discounted wage w_{ej}/d_{ij} ,

plus a transfer (φ_e), which represents the payments received by households from the rents of land. These transfers do not vary across space and I assume that they are larger for high-skilled residents ($\varphi_s > \varphi_u$).²⁰ The sum of these payments across all workers must equal total land rents, $R = \sum_i^L (p_i L_i)$, where p_i denotes the price of the land in location i . All the above-mentioned prices are determined endogenously in the model.

From the solution of the maximization problem, I can obtain an expression for the indirect utility of a worker o . Given this indirect utility, individuals first choose where to live and then where to work. For the second stage, assume that type e residents from location i draw a vector of iid match-productivities over workplace locations from a Fréchet distribution with cdf $F(\epsilon_{je}) = \exp\{-T_e \epsilon_{je}^{-\theta_e}\}$. The scale parameter T_e determines the average productivity of type e workers and $\theta_e > 1$ the dispersion of worker productivity within type, with a higher θ_e implying a lower degree of unobserved heterogeneity. Residents choose the work location that offers the highest commuting-discounted wage: $\max_j \{w_{ej} \epsilon_{jeo} / d_{ij}\}$.

Properties of the Fréchet distribution imply that the probability of a type- e resident of working in location j conditional on living in i is:

$$\pi_{j|ie} = \frac{N_{eij}}{N_{Rei}} = \frac{w_{ej}^{\theta_e} e^{-\kappa \theta_e \tau_{ij}}}{\sum_{n=1}^L w_{en}^{\theta_e} e^{-\kappa \theta_e \tau_{in}}} = \frac{w_{ej}^{\theta_e} e^{-\kappa \theta_e \tau_{ij}}}{RMA_{ei}}. \quad (5)$$

This probability depends positively on the wage offered in that location net of commuting costs, relative to all other locations. Differences in the dispersion parameters θ_s and θ_u determine differences in the incidence of commuting costs across skill groups. In addition, RMA_{ei} denotes block group i 's residential market access of type e workers and is defined as $RMA_{ei} = \sum_{n=1}^L w_{en}^{\theta_e} e^{-\kappa \theta_e \tau_{in}}$. This measure summarizes the access to employment opportunities of type e residents of block i . Since there is a continuum of agents, by the law of large numbers this probability also corresponds to the number of type e individuals living in i and working in j (N_{eij}) relative to the total type- e residents from location i (N_{Rei}).

²⁰According to the 2015 5-year ACS, around 48% of low-skilled households in Cook County lived in their own home, compared to 61.4% for high-skilled households. This latter group also received a larger amount of rent income.

Before productivity shocks are revealed, the expected income of type e residents living in i is:

$$\bar{y}_{ei} = \tilde{T}_e RMA_{ei}^{1/\theta_e} + \varphi_e, \quad (6)$$

where $\tilde{T}_e = T_e^{1/\theta_e} \gamma_{\theta_e}$, and γ_{θ_e} is the gamma constant evaluated at $1 - \frac{1}{\theta_e}$. This expression suggests that workers receive higher income in locations with better access to jobs, as measured by RMA.

In a first stage, individuals choose their residential location by drawing a vector of iid preference shocks over locations from a Fréchet distribution with cdf $F(v_{ie}) = \exp\{-v_{ie}^{-\eta_e}\}$. Properties of the Fréchet distribution imply that the expected utility of a type e resident of the city is:

$$\bar{u}_e = \gamma_{\eta_e} \left[\sum_{m=1}^L r_{Rm}^{-\eta_e(1-\beta_e)} B_{em}^{\eta_e} (\tilde{T}_e RMA_{em}^{1/\theta_e} + \varphi_e)^{\eta_e} \right]^{1/\eta_e}, \quad (7)$$

where γ_{η_e} is the gamma constant evaluated at $1 - \frac{1}{\eta_e}$. This expression shows that the expected utility of a type e city dweller depends on the average price of housing, the average expected income and the average skill-specific amenities received across all locations. Similarly, the probability that a type e resident chooses to live in location i is

$$\pi_{Rei} = \frac{N_{Rei}}{N_e} = \frac{r_{Ri}^{-\eta_e(1-\beta_e)} B_{ei}^{\eta_e} (\tilde{T}_e RMA_{ei}^{1/\theta_e} + \varphi_e)^{\eta_e}}{\sum_{m=1}^L r_{Rm}^{-\eta_e(1-\beta_e)} B_{em}^{\eta_e} (\tilde{T}_e RMA_{em}^{1/\theta_e} + \varphi_e)^{\eta_e}}, \quad (8)$$

which also corresponds to the number of type e residents in location i (N_{Rei}) relative to the city total (N_e). This expression suggests that locations with relatively more amenities, lower rents and higher residential market access are more desirable and attract more residents.

Commuting market clearing requires that the measure of type e workers employed in each location j equals the measure of type e residents commuting to j :

$$N_{Fej} = \sum_{i=1}^L \pi_{j|i} N_{Rei} = \sum_{i=1}^L \frac{w_{ej}^{\theta_e} e^{-\kappa\theta_e\tau_{ij}}}{\sum_{n=1}^L w_{en}^{\theta_e} e^{-\kappa\theta_e\tau_{in}}} N_{Rei} = w_{ej}^{\theta_e} FMA_{ej}, \quad (9)$$

where FMA_{ej} denotes firm market access, which measures the access to type e workers by firms in location j , and is greater when a location is close from highly populated residential locations. In

particular, FMA_{ej} and RMA_{ei} can be defined as:

$$FMA_{ej} = \sum_{i=1}^L \frac{e^{-\kappa\theta_e\tau_{ij}} N_{Rei}}{RMA_{ei}}, \quad RMA_{ei} = \sum_{j=1}^L \frac{e^{-\kappa\theta_e\tau_{ij}} N_{Fej}}{FMA_{ej}}. \quad (10)$$

Finally, total demand for residential floor space by type e residents is given by:

$$H_{Rei} \equiv \mathbb{E}[h_{Rei}]N_{Rei} = \frac{(1-\beta_e)}{r_{Ri}} \left(\tilde{T}_e RMA_{ei}^{1/\theta_e} + \varphi_e \right) N_{Rei}. \quad (11)$$

As expected, demand for housing depends positively on the mass of residents of each type and their expected income, and negatively on the price of residential floor space in that location.

Amenities

Amenities are an important factor determining residential location choices. For instance, Bayer et al. (2007) show that households are willing to pay more to live in locations with a high density of high-skilled workers. On the other hand, residents of locations with more natural amenities, may prefer lower population densities. I assume that amenities in a location depend on two components: residential fundamentals and residential externalities. The first one, denoted by b_{ei} , captures features of physical geography that affects the willingness to live in location i by type- e residents. The second one, represents how residential population density in the location and in nearby areas affect amenities. In particular, amenities in location i are given by:

$$B_{ei} = b_{ei} \left(\sum_j e^{-\varrho \cdot \tau_{ij}} \frac{N_{Rj}}{L_j} \right)^\sigma, \quad (12)$$

where L_j denotes land area in a block group j , σ controls the relative importance of externalities in overall residential amenities and ϱ their spatial decay.

4.2 Firms

Firms produce a single final good under perfect competition and constant returns to scale. The final good is costlessly traded, and is produced using floor space and both types of labor according

to the production function:

$$Y_j = A_j \tilde{N}_{Fj}^\alpha H_{Fj}^{1-\alpha},$$

where $\tilde{N}_{Fj} = \left[\alpha_u N_{Fju}^\rho + \alpha_s N_{Fjs}^\rho \right]^{\frac{1}{\rho}}$ corresponds to the effective units of labor force used by firms in location j and is a CES aggregator over low- and high-skilled workers with an elasticity of substitution of $\frac{1}{1-\rho}$; H_{Fj} corresponds to commercial floor space; A_j is the block group-specific productivity, which is exogenous to firms, but endogenous in the model; $\alpha = \alpha_u + \alpha_s$ denotes the total labor share, and α_e the share of type e labor.

Firms in location j choose the quantity of inputs that maximize their profits, taking wages (w_{ju}, w_{js}) and commercial real estate prices (r_{Fj}) as given. From the first order conditions, the following expressions show how firms substitute between both types of labor and the demand of total effective labor:

$$\frac{w_{ju} N_{Fju}^{1-\rho}}{\alpha_u} = \frac{w_{js} N_{Fjs}^{1-\rho}}{\alpha_s}, \quad (13)$$

$$\tilde{N}_{Fj} = (\alpha A_j)^{\frac{1}{1-\alpha}} \left[\alpha_u^{\frac{1}{1-\rho}} w_{ju}^{\frac{-\rho}{1-\rho}} + \alpha_s^{\frac{1}{1-\rho}} w_{js}^{\frac{-\rho}{1-\rho}} \right]^{\frac{1-\rho}{\rho(1-\alpha)}} H_{Fj}. \quad (14)$$

Note that labor demand in location j increases when local productivity or the amount of floor space increase, or when wages decrease. Finally, using the zero profit condition, I derive the equilibrium price of commercial floor space in location j , which shows that firms are able to pay higher rents in locations with higher productivity and/or lower wages:

$$r_{Fj} = \alpha^{\frac{\alpha}{1-\alpha}} (1-\alpha) A_j^{\frac{1}{1-\alpha}} \left[\alpha_u^{\frac{1}{1-\rho}} w_{ju}^{\frac{-\rho}{1-\rho}} + \alpha_s^{\frac{1}{1-\rho}} w_{js}^{\frac{-\rho}{1-\rho}} \right]^{\frac{\alpha(1-\rho)}{\rho(1-\alpha)}}. \quad (15)$$

Productivity

I assume that local productivity depends on two components: (i) production fundamentals from location j (a_j), and (ii) production externalities, as captured by worker density in that and nearby

locations.²¹ Specifically,

$$A_j = a_j \left(\sum_j e^{-\nu \cdot \tau_{ji}} \frac{N_{Fi}}{L_i} \right)^\delta, \quad (16)$$

where N_{Fi}/L_i corresponds to employment density in location i , δ controls the relative importance of these externalities on determining productivity, and ν their spatial decay.

4.3 Real Estate Market with LUR

Based on the canonical models of housing in Muth (1969) and Fujita (1989), I present a simple model of the real estate market with developers and LUR. In order to produce floor space, developers use capital and land with a production technology that exhibits constant returns to scale. Furthermore, developers are subject to different productivity shocks in each location for both commercial and residential real estate. These shocks account for all the unobserved factors (including other regulations) that affect construction of either type of floor space in a location. Finally, assume that the owners of capital do not live in the city and that the price of capital is determined in a national market and normalized to one.

Total demand for residential and commercial floor space in every block group is given by the solutions of the residents' and firms' optimization problems. Given these assumptions, in a world with no LUR, developers would build floor space for the group of agents (residents or firms) with the highest willingness to pay, until the price of commercial and residential floor space equalize.²² Rent equalization leads to an optimal distribution of land between residential and commercial uses. However, when city authorities regulate the use of land, the price of both types of floor space could differ in equilibrium.

To incorporate these forces into the model, consider a Zoning Ordinance given by the matrix $\mathbb{Z} \in \{\omega_R, \omega_F, \omega_M, \lambda, \bar{h}_R, \bar{h}_F, \bar{h}_M\}$, where ω_T is a vector containing the shares of land that can be used

²¹The standard interpretation of these externalities is that density facilitates knowledge spillovers, input sharing or labor market pooling. See Rosenthal and Strange (2004) for a detailed review on agglomeration economies. While there is debate as to whether it is the density or the levels of people that determine agglomeration economies, recent quantitative models include density as a determinant of these externalities, e.g., Ahlfeldt et al. (2015).

²²This is the implicit assumption in recent quantitative models, such as Ahlfeldt et al. (2015) and Tsivanidis (2019).

for type T space (residential, mixed-use, commercial) in every block group, with $\omega_{Ri} + \omega_{Mi} + \omega_{Fi} = 1$; λ corresponds to the allowed share of residential space within each block group's mixed-use districts; and \bar{h}_T denotes the maximum allowed FAR for type T structures. Assuming that land in a block group is fixed and can be divided between uses, a representative developer chooses the level of capital that maximizes his profits given the price of land in block i (p_i) and subject to LUR. In residential and commercial districts, his problem is given by:

$$\max_{K_i} r_{Ti} H_T(\omega_{Ti} L_i, K_i) - p_i \omega_{Ti} L_i - K_i \quad \text{s.t.} \quad \left(\frac{K_i}{\omega_{Ti} L_i} \right)^{1-\mu} \leq \bar{h}_{Ti} \quad \text{for } T \in \{R, F\},$$

where $H_T(\cdot) = \nu_{Ti} (\omega_{Ti} L_i)^\mu K_i^{1-\mu}$; and $\left(\frac{K_i}{\omega_{Ti} L_i} \right)^{1-\mu}$ approximates the unconstrained FAR.²³ The vector ν_{Ti} denotes the productivity of developers in block i for type- T floor space. In mixed-use districts ($T = M$), the developer solves:

$$\max_{K_i} r_{Ri} \lambda_i H_R(\omega_{Mi} L_i, K_i) + r_{Fi} (1 - \lambda_i) H_F(\omega_{Mi} L_i, K_i) - p_i \omega_{Mi} L_i - K_i \quad \text{s.t.} \quad \left(\frac{K_i}{\omega_{Ti} L_i} \right)^{1-\mu} \leq \bar{h}_{Ti}.$$

The solutions from these problems, together with the zero profit conditions, yield the total supply of residential and commercial floor space, and the price of land in block group i . In particular when the constraint is binding, the solution is given by:

$$H_{Ri}^S = \nu_{Ri} L_i [\omega_{Ri} \bar{h}_{Ri} + \omega_{Mi} \lambda_i \bar{h}_{Mi}], \quad (17)$$

$$H_{Fi}^S = \nu_{Fi} L_i [\omega_{Fi} \bar{h}_{Fi} + \omega_{Mi} (1 - \lambda_i) \bar{h}_{Mi}], \quad (18)$$

$$p_i = \sum_T \omega_{Ti} p_{Ti} \quad \text{with} \quad p_{Ti} = \bar{h}_{Ti} \left[\lambda_i r_{Ri} \nu_{Ri} + (1 - \lambda_i) r_{Fi} \nu_{Fi} - \bar{h}_{Ti}^{\frac{\mu}{1-\mu}} \right], \quad (19)$$

$$\chi_{Ti} = \lambda_i r_{Ri} \nu_{Ri} + (1 - \lambda_i) r_{Fi} \nu_{Fi} - \frac{1}{1 - \mu} \bar{h}_{Ti}^{\frac{\mu}{1-\mu}}, \quad (20)$$

where $T \in \{R, M, F\}$; $\lambda_i = 1$ when $T = R$ and $\lambda_i = 0$ when $T = F$; and χ_{Ti} denotes the Lagrangian multiplier from the optimization problem. This multiplier represents the shadow costs of FAR restrictions (i.e., the marginal profits of relaxing them), and its solution comes from the first order and the complementary slackness conditions. Floor space market clearing must satisfy that total

²³This expression comes from dividing the total floor space and total land in a location, and it is a good approximation for FAR if total built space is closely related to the total of real estate services provided.

demand equals total supply for each type of space T in every block group i .

4.3.1 Equilibrium with LUR

Given the model's parameters $\{\{\beta_e, \theta_e, \eta_e, \tilde{T}_e, \sigma_e, \delta_e\}_{e \in \{u, s\}}, \kappa, \alpha, \rho, \mu\}$, exogenous location-specific characteristics $\{\mathbf{b}_u, \mathbf{b}_s, \mathbf{a}, \boldsymbol{\tau}, \boldsymbol{\alpha}_S, \mathbf{L}, \boldsymbol{\nu}_R, \boldsymbol{\nu}_F\}$, the city wide total population by skill-type $\{N_u, N_s\}$ and zoning code $\mathbb{Z} = \{\omega_R, \omega_M, \omega_F, \lambda, \bar{h}_R, \bar{h}_M, \bar{h}_F\}$, the general equilibrium of the model is given by the vectors $\{\{\mathbf{N}_{Re}, \mathbf{N}_{Fe}, \mathbf{w}_e\}_{e \in \{u, s\}}, \mathbf{r}_R, \mathbf{r}_F, \mathbf{p}_R, \mathbf{p}_F, \mathbf{p}_M, \boldsymbol{\chi}_R, \boldsymbol{\chi}_F, \boldsymbol{\chi}_M\}$, the city-wide expected utility for both types of workers $\{\bar{u}_u, \bar{u}_s\}$ and transfers from the rents of land $\{\varphi_u, \varphi_s\}$, such that both types of workers maximize their utility given their budget constraint, firms maximize their profits, developers maximize their profits subject to zoning and FAR restrictions, there are zero profits in the good and real estate markets, markets clear, and block group level working and residential population add up to the city totals.

In particular, the equilibrium is determined by a system of 13 equations: expected utility (7), residential choice probabilities (8), labor supply (9), optimal substitution between high- and low-skilled workers (13), zero profits in the market for the final good (15), residential floor space market clearing ((17) and (11) for both skill types), commercial floor space market clearing ((18) and (14)), zero profits in real estate markets (19), and the shadow costs of FAR restrictions (20).²⁴

5 Calibration

In this section, I show how to recover the model's unobservable variables using block group level data on real estate prices, LUR and skill-composition, and given values for the different parameters. I build on the methodologies from Ahlfeldt et al. (2015) and Tsivanidis (2019) to recover unobserved wages, amenities and productivities. Afterward, I solve for the real estate market equilibrium with LUR, and recover the price of land and the shadow price of FAR in each block group. Finally, I

²⁴If amenities and productivities were exogenous, the competitive equilibrium would be efficient, conditional on the zoning ordinance. In the case of endogenous externalities, the competitive equilibrium will not necessarily be efficient and multiple equilibria are possible. Ahlfeldt et al. (2015) show that in this family of models, there exist unique vectors of unobserved location characteristics that are consistent with the data being an equilibrium, given values for parameters and observed data on real estate prices, commuting and residential and workplace population.

present some calibration results.

5.1 Market Access, Wages and Productivity

Given parameters $\{\theta_s, \theta_u, \kappa\}$, data on the skill composition of residential and work block groups ($\{\mathbf{N}_{Fu}, \mathbf{N}_{Fs}, \mathbf{N}_{Ru}, \mathbf{N}_{Rs}\}$), and bilateral commuting times ($\{\boldsymbol{\tau}\}$), commuting market clearing conditions provide the system of equations from (10) that can be solved for residential and firm market access for each skill-type. Using the recovered measures of RMA and FMA, I use equation (9) to recover a measure of skill-specific wages for every location.²⁵

Afterward, using the firm's first order and zero profit conditions, it is possible to derive an expression that relates block group i 's firm productivity to commercial real estate prices and wages:

$$A_{ei} = \left(\frac{r_{Fi}}{1 - \alpha} \right)^{1 - \alpha} \left(\frac{w_{ei}}{\alpha} \right)^{\alpha} \alpha_e^{\frac{\alpha}{\rho}} \vartheta_{ei}^{\frac{\alpha(1 - \rho)}{\rho}} \quad e \in \{u, s\},$$

where $\vartheta_{ei} = (w_{ei} N_{F_{ei}}) / (\sum_{e'} w_{ie'} N_{F_{e'i}})$ corresponds to the labor expenditure share on type e workers in block group i . Since productivity is assumed to be Hicks-neutral ($A_{iu} = A_{is}$), I assume that the labor share of low- and high-skilled labor also vary across block groups in the city, i.e., α_{uj} and α_{sj} and $\alpha_{uj} + \alpha_{sj} = \alpha$. Normalizing to a geometric mean of 1, the previous equation can be written as:

$$\tilde{A}_i = \tilde{A}_{ei} = \tilde{r}_{Fi}^{1 - \alpha} \tilde{w}_{ei}^{\alpha} \tilde{\alpha}_{ei}^{-\alpha/\rho} \tilde{\vartheta}_{ei}^{\alpha(1 - \rho)/\rho} \quad e \in \{u, s\}, \quad (21)$$

where the tilde above a variable denotes that it has been normalized. These equations imply that, given parameters $\{\alpha, \rho\}$, observed data $\{\mathbf{N}_{Fu}, \mathbf{N}_{Fs}, \mathbf{r}_F\}$, and recovered wages $\{\mathbf{w}_u, \mathbf{w}_s\}$, I can determine unique vectors of block group level productivity $\{\mathbf{A}\}$ and measures of the intensity in which different types of workers are used $\{\boldsymbol{\alpha}_u, \boldsymbol{\alpha}_s\}$. Fundamental productivities can then be recovered using equation (16) given values of $\{\delta, \nu\}$ and data on worker density.

²⁵Since the equilibrium system is only defined to scale, I normalize the geometric mean of wages to one. Using the normalized value of wages, I re-scale the measures of RMA and FMA to be consistent with this choice of units.

5.2 Real Estate Market

Having recovered block group level measures of productivity, wages and skill-specific labor shares, and given data $\{\mathbf{N}_{Fu}, \mathbf{N}_{Fs}, \mathbf{N}_{Ru}, \mathbf{N}_{Rs}, \mathbf{r}_F, \mathbf{r}_R, \mathbf{Z}\}$ and parameters $\{\beta_u, \beta_s, \theta_u, \theta_s, \alpha, \rho, \mu, \tilde{T}_u, \tilde{T}_s\}$, I solve for the real estate market equilibrium $\{\mathbf{p}, \nu_R, \nu_F, \chi, \varphi_u, \varphi_s\}$ using the following procedure:

1. Set $\varphi_u = \varphi_u^0$, $\varphi_s = \varphi_s^0$, and solve for ν_R and ν_F using the floor space market clearing conditions;
2. Find prices $\{\mathbf{p}_T\}$, $T \in \{R, M, F\}$ using developers' zero profit conditions, and $p_i = \sum_T \omega_{Ti} p_{Ti}$;
3. Find $\bar{\varphi}_u = \frac{\sum_i p_i L_i}{N_{Ru} + x N_{Rs}}$ and $\bar{\varphi}_s = x \bar{\varphi}_u$, where $x = \varphi_s^0 / \varphi_u^0$;
4. If $\bar{\varphi}_u = \varphi_u^0$ and $\bar{\varphi}_s = \varphi_s^0$, continue to 5; else, update $\varphi_e^1 = \zeta \bar{\varphi}_e + (1 - \zeta) \varphi_e^0 \forall e$, and repeat until convergence;
5. Find Lagrange multipliers $\{\chi_T\}$, $T \in \{R, M, F\}$, and $\chi_i = \sum_T \omega_{Ti} \chi_{Ti}$.

I set the initial values $\varphi_u^0 = 5.38$ and $\varphi_s^0 = 8.10$, which correspond to the average ratio of housing value plus housing income relative to the total household wage income in Cook County according to the 2015 ACS.²⁶ Step 4 comes from the fact that total payments to households have to equal total land rents: $\varphi_s N_{Rs} + \varphi_u N_{Ru} = \sum_i p_i L_i$.

5.3 Residential Amenities

For each skill type e , given parameters $\{\theta_e, \beta_e, \eta_e, \tilde{T}_e\}$, observed data $\{\mathbf{N}_{Re}, \mathbf{r}_R\}$ and recovered measures of residential market access and land rents $\{\mathbf{RMA}_e, \varphi_e\}$, I recover block group skill-specific amenities, up to a normalization, using residential choice probabilities from equation (8):

$$\tilde{B}_{ei} = \frac{B_{ei}}{\bar{B}_e} = N_{Rei}^{1/\eta_e} r_{Ri}^{1-\beta_e} \tilde{y}_{ei}^{-1}, \quad (22)$$

where y_{ei} is the expected income from equation (6). Fundamental amenities can then be recovered using equation (12) given values of $\{\sigma, \varrho\}$ and data on residential population density. Note that equations (21) and (22) are similar to those determining the spatial equilibrium in Rosen-Roback

²⁶I define housing income as the income households obtain from rent plus 1% of the value of their properties.

type of models (Roback, 1982), where amenities and productivity are determined by labor market opportunities and local housing prices.

5.4 Welfare

Given data on $\{\mathbf{r}_R, \tilde{\mathbf{B}}_e, \mathbf{RMA}_e\}$ and parameters $\{\beta_e, \theta_e, \eta_e, \varphi_e, \tilde{T}_e\}$ for each type of worker, I can recover the average utility of a type e city resident using equation (7):

$$\bar{u}_e = \gamma_{\eta_e} \left[\sum_{m=1}^L r_{Rm}^{-\eta_e(1-\beta_e)} B_{em}^{\eta_e} \left(\tilde{T}_e RMA_{em}^{1/\theta_e} + \varphi_e \right)^{\eta_e} \right]^{1/\eta_e}.$$

I can also recover the semi-elasticity of welfare of type e residents with respect to a policy change in a block group i . Let ξ_i be a specific LUR inside i (either zoning or FAR). From the previous equation, I can derive the semi-elasticity of welfare to changes in this policy (ε_{u_e, ξ_i}):

$$\varepsilon_{u_e, \xi_i} = \sum_m \pi_{Rem} \left[-(1-\beta_e) \varepsilon_{r_{Rm}, \xi_i} + \sigma_e \varepsilon_{\pi_{Rsm}, \xi_i} + \frac{\tilde{T}_e RMA_{em}^{1/\theta_e}}{\theta_e \bar{y}_{em}} \varepsilon_{RMA_{em}, \xi_i} + \frac{\varphi_e}{\bar{y}_{em}} \varepsilon_{\varphi_e, \xi_i} \right] \quad (23)$$

where $\varepsilon_{r_{Ri}, \xi_i}$, $\varepsilon_{\pi_{Rsi}, \xi_i}$, $\varepsilon_{RMA_{ei}, \xi_i}$ and ε_{p_i, ξ_i} correspond to the respective semi-elasticities of housing prices, spatial concentration of high-skilled residents, land prices and RMA with respect to the change in policy ξ_i . The previous expression suggests that the effect of a policy change on welfare of type e residents can be decomposed into four components: (i) changes in housing prices, (ii) changes in sorting patterns (that affect amenities), (iii) changes in wages (as summarized by RMA), and (iv) changes in the income coming from the rents of land.

5.5 Parameters

In this subsection, I show the source of the different parameters needed to successfully recover the model's unobservables and quantify the policy counterfactuals. The parameters $\{\kappa, \rho, \alpha, \eta_u, \eta_s\}$ are calibrated to existing values from the literature. First, I set the dis-utility of commuting $\kappa = 0.01$ based on Ahlfeldt et al. (2015). Second, I set the elasticity of substitution between high- and low-skilled workers $\frac{1}{1-\rho} = 1.5$ based on estimates from Ciccone and Peri (2005). Third, I set the

cost share of commercial floor space to $1 - \alpha = 0.156$ based on the share of structures in value added found in Greenwood et al. (1997) for the US. Finally, I used the estimates of $\eta_u = 2.959$ and $\eta_s = 3.329$ from Tsivanidis (2019) for the Fréchet shape parameters of the distribution of shocks over residential locations.

Housing expenditure shares $\{1 - \beta_u, 1 - \beta_s\}$ are calibrated using the 2015 ACS for Cook County as the average share of housing expenditures for all households within skill groups. This share is calculated as the ratio between annual housing costs (owning plus renting costs) and the total household income. These shares correspond to $1 - \beta_u = 0.360$ $1 - \beta_s = 0.268$. The cost share of land in the production of real estate μ is calibrated using the average land shares of property value across census tracts in Cook County estimated by Davis et al. (2019): $\mu = 0.256$.

The Fréchet shape parameters from the workers' match-productivity distribution $\{\theta_u, \theta_s\}$ are identified using a gravity approach, given a value for κ . In particular, the log version of equation (5) provides a gravity equation relating travel time between locations to commuting flows:

$$\ln \pi_{j|ie} = \zeta_{0,ie} + \zeta_{1,je} - \theta_e \kappa \tau_{ij} + \varepsilon_{ije}$$

where $\zeta_{0,ie}$ and $\zeta_{1,je}$ correspond to origin and destination fixed effects, and ε_{ije} is an unobserved error term. Since the commuting matrix between block groups is considerably sparse, I estimate this equation using flows between census tracts.²⁷ Furthermore, given that the LODES data do not contain commuting flows by skill, I estimate this equation using flows for low- and high-wage workers.²⁸ Table 5 shows the results of these regressions, which indicate that low-wage workers are more sensitive to commuting, both when travel times or distances are considered.

To build skill-specific estimates, I average the estimates from Columns (1) and (2) using as weights the average share of low- and high-wage residents by skill category across block groups in Cook County.²⁹ Using $\kappa = 0.01$, I obtain $\theta_u = 4.33$ and $\theta_s = 4.08$, indicating a larger dispersion in the productivity of high-skilled workers. Even though these estimates are not necessarily causal,

²⁷Around 91.6% of block groups pairs have zero commuters. This share decreases to 66% between tracts. Implications of granularity in spatial models are discussed in Dingel and Tintelnot (2021).

²⁸Even though this breakdown by income leaves a lot of skill heterogeneity within groups, I am not aware of any other public dataset that contains commuting flows between blocks by skill or income groups.

²⁹Among low-skilled, the share of low-wage workers is 0.577. Among high-skilled, the share is 0.401.

Table 5: Gravity Regressions

	(1)	(2)	(3)	(4)
	Low Wage	High Wage	Low Wage	High Wage
Travel Time	-0.050*** (0.000)	-0.035*** (0.000)		
Distance			-0.038*** (0.000)	-0.027*** (0.000)
R-squared	0.396	0.426	0.387	0.421
Observations		1,737,124		

Notes: This table shows the results of OLS regressions on the log conditional commuting shares by income level on travel times and distance between census tracts in 2015-2016 in Cook County. Regressions include tract of origin and of destination fixed effects. Robust standard errors in parentheses; *** p<0.01, ** p<0.05, * p. <0.1.

they lie between the estimates from Tsivanidis (2019)—who finds $\theta_u = 3.30$ and $\theta_s = 2.72$ for Bogotá— and Ahlfeldt et al. (2015)—who find $\theta = 6.83$ for Berlin.

I calibrate the scale parameters of the match-productivity Fréchet distribution using the method proposed by Tsivanidis (2019). In particular, after normalizing $\tilde{T}_u = 1$, I calibrate \tilde{T}_s “so that the aggregate wage skill premium in the model matches that observed in the data” (Tsivanidis, 2019). In particular, I find $\tilde{T}_s = 1.162$ by solving: $1.92 = \frac{\tilde{T}_s \sum_i RMA_{si}^{1/\theta_s} N_{Fsi}/N_{Fi}}{\sum_i RMA_{ui}^{1/\theta_u} N_{Fui}/N_{Fi}}$, where 1.92 is the ratio between the average hourly wage of high- and low-skilled workers from the 2015 ACS. Finally, from Ahlfeldt et al. (2015) I take the parameters that determine amenity and productivity spillovers ($\sigma = 0.071$ and $\delta = 0.155$) and their spatial decay ($\rho = 0.362$ and $\nu = 0.760$, respectively).³⁰

5.6 Calibration Results

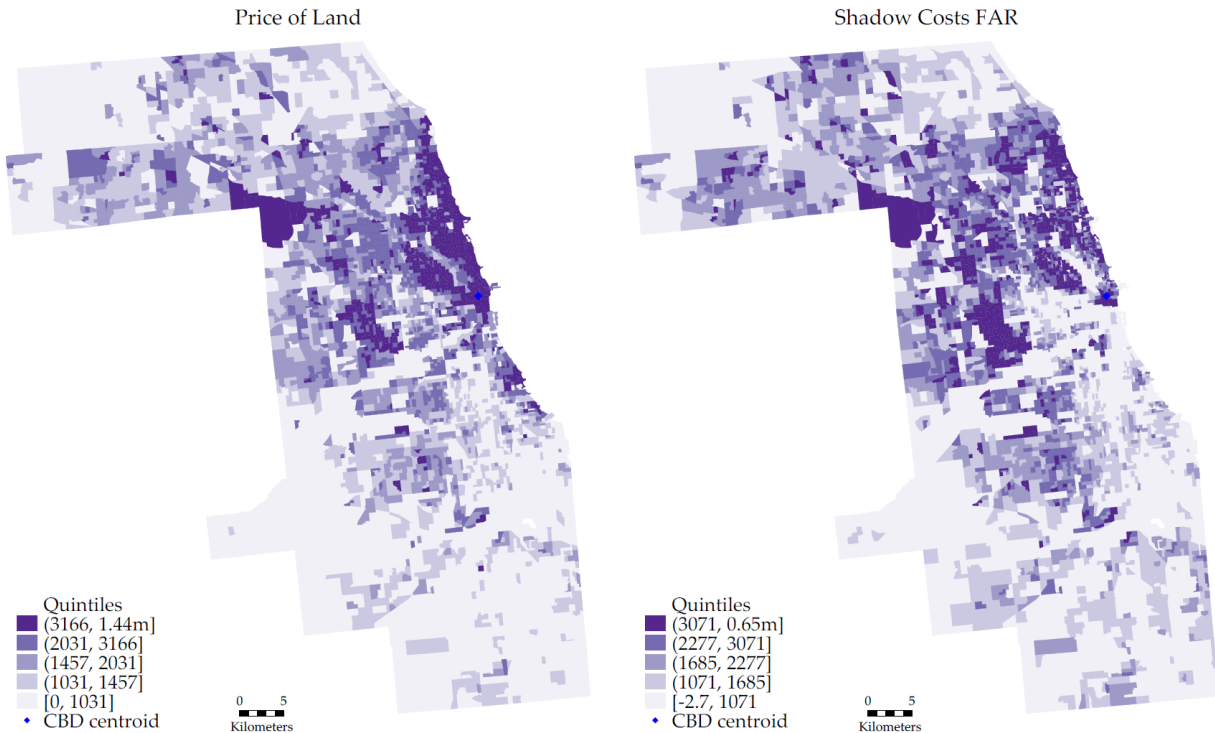
In this section, I present a brief description of the variables recovered using the calibration method presented in the previous section. Table A7 in the Appendix presents descriptive statistics of the different variables recovered with the model.

In Figure 4, I present the geographic distribution of land prices (Left Panel) and shadow costs

³⁰These parameters, which are estimated for the City of Berlin, are in line with the ones from Tsivanidis (2019). In general, there are few studies estimating structural agglomeration parameters for cities in the US. One exception is Khan (2021), who presents estimates for Chicago, but whose parameters I do not use as his paper has not gone through the peer review process. More research is needed in this front for a wider sample of cities.

of FAR restrictions (Panel B) in Cook County. The maps show that land is most expensive around the CBD and along the coast of Lake Michigan, particularly north of downtown. Moreover, the shadow costs of FAR restrictions are also relatively high north of downtown, but also in some block groups in the west, particularly around O'Hare airport. These values suggest that the city could benefit from relaxing FAR restrictions in these block groups relative to other locations. From the calibration procedure, I also obtain values for the transfers that residents receive from the rents of land: $\varphi_u = 4.20$ and $\varphi_s = 6.32$, which indicate that high-skilled residents received 50% more land rents than low-skilled residents.

Figure 4: Price of Land and Shadow Cost of Regulations in Cook County, 2015-2016



Notes: This figure shows land prices and costs of FAR restrictions in every block group in Cook County for the period 2015-2016. Both variables are recovered using the quantitative model. Blue dot represents Chicago's CBD.

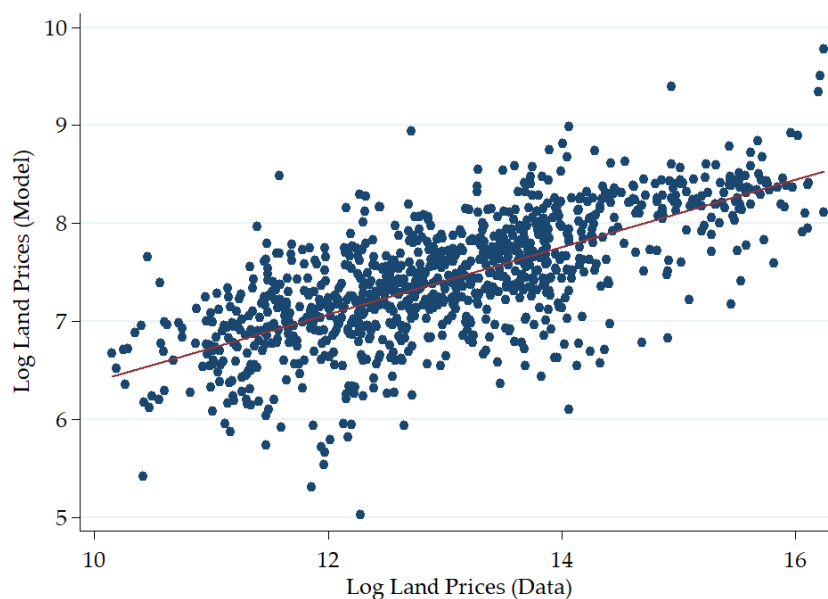
In Figures A6 and A7 in the Appendix, I show the geographic distribution of amenities and productivities across block groups. The distribution of amenities is quite similar for high- and low-skilled residents, suggesting that both have similar tastes regarding residential amenities. In addition, local productivity is higher around the CBD.³¹ Regarding welfare, Table A8 shows the

³¹There is also a high and significant correlation between productivity and commercial real estate prices (0.42),

average expected utility for a type e resident in Cook County. I compute this measure with and without the income from land rents. In both cases, welfare is higher for high-skilled relative to low-skilled residents, but the gap between both groups is larger when transfers from land are allowed.

Finally, to test the fitness of the model, I explore the relationship between land prices recovered by my model and land prices estimated by Davis et al. (2019) for Cook County. The latter estimates land prices for all Census tracts in the United States using different data, model and methods than the ones from this paper. Both set of land prices have a coefficient of correlation of 0.70, which is significant at the 99%, suggesting a strong relation between them and a good fit of the model predicting land prices. In Figure 5, I present the scatter plot between both estimated land prices, where the clear positive relationship between both is evident.

Figure 5: Model Fit—Price of Land: Model vs. Davis et al. (2019)



Notes: This figure shows a scatterplot and the regression line between the logarithm of the land prices predicted by the quantitative model and the logarithm of the land prices estimated by Davis et al. (2019). Since prices from Davis et al. (2019) are at the tract level, I aggregate my model's recovered prices using a weighted sum of the block group prices, where the weights are the block group's area share within its tract.

and the share of land zoned for commercial only uses (0.48).

6 The Incidence of Land Use Regulations

I now explore the effect of zoning and FAR restrictions on the recovered measures of wages, amenities, productivity and land prices. In particular, I follow the same empirical strategy from Section 3, in which I estimate 2SLS regressions of these outcomes on current zoning and FAR regulations using the 1923 Chicago Zoning Ordinance districts as instruments. Afterward, I quantify welfare under four different counterfactual scenarios to study how welfare and welfare inequality change when there are large changes in LUR.

6.1 LUR and Wages

We start by exploring the relationship between LUR and wages. The 2SLS estimates suggest that a 10pp increase in the share of land zoned for residential-only uses leads to a decrease of 4.9% in the wage of low-skilled workers and of 4.1% for high-skilled workers. However, a similar increase in the share of mixed-use designations leads to a wage increase of 4.7% and 5.1% for each types of workers, respectively. Regarding FAR restrictions, an increase of one-unit in the allowed FAR in a particular block group, leads to a 19% increase in the wages of both types. I present these estimates in Columns (1) and (2) from Table 6. These results validate results from Table A5: more stringent LUR in a location leads to lower wages. Our model suggests that firms respond to higher real estate prices (brought by tighter regulations) by adjusting their wages down.³²

6.2 LUR, Amenities and Productivity

Results from Table 6 also suggest that more stringent LUR lead to higher residential amenities. In particular, estimates from Columns (3) and (4) from Panel A show that a 10pp increase in the share of land zoned for residential-only uses leads to an increase of around 3.1%-3.6% in local amenities, relative to block groups with more commercial zoning. In addition, a one-unit increase in the allowed FAR leads to a 4% reduction in amenities. Nonetheless, a 10pp increase in the share

³²I also explore the effect of LUR on residential and firm market access. Results show that an increase in the share of mixed-use designations leads to a larger increase in RMA and FMA than a similar increase in any other designation, suggesting that both firms and workers benefit when regulation lets them locate close to each other.

Table 6: Effects of LUR on Model’s Unobservables

	(1)	(2)	(3)	(4)	(5)	(6)	(7)
	Ln Wages		Ln Amenities		Ln Pro-	Ln Price	Ln. Shadow
	Low Sk	High Sk	Low Sk	High Sk	ductivity	Land	Price
Panel A							
Sh. Res. Only	-0.50*** (0.00)	-0.42*** (0.00)	0.35*** (0.00)	0.31*** (0.00)	-0.32*** (0.00)	1.65*** (0.00)	2.87*** (0.00)
Sh. Mixed-uses	0.46*** (0.00)	0.50*** (0.00)	-0.04*** (0.00)	-0.09*** (0.00)	0.57*** (0.00)	1.99*** (0.00)	2.65*** (0.00)
F-Test	11.05	11.14	11.33	11.33	13.79	11.08	11.08
Panel B							
Mean FAR	0.19*** (0.00)	0.19*** (0.00)	-0.05*** (0.00)	-0.04*** (0.00)	0.18*** (0.00)	-0.16*** (0.00)	-0.53*** (0.00)
F-Test	19.60	20.64	19.30	19.30	20.56	19.98	19.98
Observations	1,385	1,385	1,391	1,332	1,394	1,394	1,394

Notes: This table shows the results of 2SLS regressions of the effects of different LUR measures on measures of wages, amenities, productivity, price of land and the shadow price of FAR restrictions by block group. The estimations use the 1923 zoning ordinance as instrument and include controls for block group’s land area, distance to the CBD and to major waterways, transit access, current racial composition, and historical covariates. The dependent variables are in logs and were recovered using the quantitative model from Section 4. Spatial Heteroscedasticity and Autocorrelation Consistent (SHAC) standard errors in parentheses (Conley, 1999); *** p<0.01, ** p<0.05, * p. <0.1.

of mixed-use designations leads to a reduction in amenities between 0.4% and 0.9% for low and high-residents, respectively.

Zoning and FAR restrictions also have sizable effects on local productivity. Specifically, a 10pp increase in the share of land zoned for residential-only uses leads to a 3.1% decrease in local productivity, relative to block groups with more commercial zoning. A similar increase in mixed-use designations leads to a productivity increase of 5.9%, while a one-unit increase in allowed FAR results in an 18% increase. Two forces are behind these results. First, recall that more mixed-use designations and increases in allowed FAR lead to higher spatial concentration of workers. This concentration generates knowledge spillovers, labor market pooling and/or input-out sharing, leading to productivity gains (Rosenthal and Strange, 2004). Second, more mixed-use designations also lead to increases in the spatial concentration of residents, which affects local productivity through increases in wages and firm market access.

6.3 LUR, Price of Land and Stringency

Finally, I estimate the effect of LUR on land prices and the shadow price of regulations. Estimates from Column (6) suggest that more stringent regulation leads to increases in local land prices. In particular, a 10pp increase in the share of land zoned for residential-only uses leads to an increase of 18% in the price of land, relative to block groups with more commercial zoning. Moreover, a one-unit decrease in the allowed FAR, leads to a 16% increase in prices. These results are in line with research studying the home-voter hypothesis, who suggest that land and home owners benefit from tighter LUR as it increases the value of their properties (Fischel, 2001). Nonetheless, and perhaps surprising, a higher share of land zoned for mixed-uses leads to a 22% increase in land prices.

Following the framework proposed by Brueckner et al. (2017), I use results from Column (6) to study the stringency of FAR. In particular, the authors suggest that if the coefficient accompanying allowed FAR from a regression on land prices is positive, the existing limit is stringent. Thus, the negative coefficient from Column (6) could suggest that on average, FAR restrictions in Chicago are not too stringent, which lies in line with estimates from Brueckner and Singh (2020). On the other hand, this framework, applied to results from Panel A, suggests that current zoning regulations are quite stringent. An alternative way to study stringency is by analyzing the effect of FAR on their shadow prices. Recall that these prices represent the profits developers fail to receive due to FAR restrictions. Estimates from Panel B from Column (7) suggest that relaxing allowed FAR limits by one-unit lead to a 53% decrease of the local shadow price of FAR. Hence, they suggest that on average, FAR restrictions in Chicago are binding and quite stringent.³³

6.4 LUR and Welfare

In this final subsection, I study how the welfare of both types of residents and welfare inequality change when there is a discrete change in LUR. I do this by simulating two different counterfactual scenarios in which I use the semi-elasticities of real estate prices (from Table 3) and the distribution

³³Results from Panel A suggest that increasing residential zoning would lead to higher shadow prices, as residential areas tend to have lower FAR.

of skills (from Table 4) with respect to changes in LUR, together with the solution from Section 5. Furthermore, as described in Section 5.4, I decompose the total change in welfare induced by the policies into four mechanisms: changes in housing prices, changes in amenities brought by sorting, changes in residential market access and changes in the land rent income. Given the static nature of the model, these counterfactual exercises show the spatial equilibria before and after the proposed changes in LUR, and ignore the transition path between both.

First, consider an increase of one unit in the allowed FAR limit in those block groups from the top decile of the shadow price distribution, that is, in those locations where FAR limits are most constrained. In this scenario, which is presented in Panel A, welfare increases by 12.3% for low-skilled residents and 28.2% for high-skilled, hence, welfare inequality increases. For both types, potential changes in housing prices or in amenities are not important drivers of higher welfare. In fact, changes in RMA are the most important force driving these effects. Specifically, if RMA did not change due to this policy, welfare would increase by 7.4% and 7.7% for low- and high-skilled residents, respectively. This effect comes from the fact that the policy would increase allowed densities in locations relatively close from the CBD, where there is a high concentration of jobs. Moreover, high-skilled workers are the ones that benefit the most from this increase in access. Finally, notice that both types of residents are compensated similarly with higher rents of land.

Second, I simulate an increase of one unit in the allowed FAR limit in those block groups from the bottom decile of the shadow price distribution, that is, in those locations where FAR limits are the least constrained. In this scenario (Panel B), welfare effects are close to zero: -0.4% for low-skilled residents and 0.1% for high-skilled. In this case, changes in RMA contribute negatively to changes in welfare, which is related to the fact that allowed densities would increase in locations that are relatively far from most jobs. On the other hand, cheaper housing prices slightly compensate this effect. Three important conclusions arise from these results. First, the current zoning ordinance is a regressive policy that benefits high-skilled residents more. Second, relaxing LUR in areas where they bind the most can lead to welfare improvements for both groups, but can potentially lead to higher welfare inequality. Third, both homeownership and increases in residential market access are important forces driving welfare gains.

Table 7: Changes in Welfare - Counterfactuals

	(1)	(2)	(3)	(4)	(5)
Panel A: $\Delta\text{FAR} = 1$ if block in top decile of χ_i					
	Total Change	$\Delta\text{Prices}=0$	$\Delta\text{Sorting}=0$	$\Delta\text{RMA}=0$	$\Delta\text{LandInc}=0$
Welfare Low-Skilled	12.3%	12.2%	12.5%	7.38%	5.54%
Welfare High-Skilled	28.2%	28.1%	28.3%	7.68%	22.0%
Relative Welfare	17.98				
Panel B: $\Delta\text{FAR} = 1$ if block in bottom decile of χ_i					
	Total Change	$\Delta\text{Prices}=0$	$\Delta\text{Sorting}=0$	$\Delta\text{RMA}=0$	$\Delta\text{LandInc}=0$
Welfare Low-Skilled	-0.38%	-0.46%	-0.33%	0.40%	-0.76%
Welfare High-Skilled	0.08%	0.04%	0.12%	0.40%	-0.31%
Relative Welfare	0.005				

Notes: This table shows the changes in the expected utility by skill level in Chicago with respect to the baseline welfare levels from Table A8, together with the welfare change when each one of the mechanisms is set to zero, when there is an increase of 1 unit in the Floor-to-Area ratio in either the top (Panel A) or bottom (Panel B) deciles of the distribution of regulatory costs. The four mechanisms are (i) changes in housing prices; (ii) changes in amenities brought by changes in sorting; (iii) changes in residential market access; and (iv) changes in the income coming from the rents of land.

7 Conclusions

Land use regulations (LUR) shape the daily life of hundreds of millions of urban dwellers around the world. Local governments use different tools, such as zoning restrictions, floor-to-area ratio limits, lot size restrictions, etc., to regulate the use of land. While there is substantial research on the effects of these tools on housing markets, segregation and other outcomes, less empirical work has been done assessing their general equilibrium effects and their impact on welfare and welfare inequality between different types of residents.

This paper investigates the effects of zoning (permitted uses) and FAR restrictions on a wide range of block group level outcomes, the welfare of high- and low-skilled people and welfare inequality. Using detailed geographic data for Cook County and the City of Chicago in 2015-2016, I start by studying the effect of current zoning and FAR restrictions on the real estate market and sorting by skill across block groups. For identification, I use the 1923 Zoning Ordinance, which was the first comprehensive zoning ordinance in Chicago. I find that an increase of 10 percentage points in the share of land designated for mixed-uses, leads to a 6.7% decrease in housing prices, and a decrease in the share of high-skilled residents in that block group.

Afterwards, I build a quantitative model of a city with two types of workers. The inclusion of individual heterogeneity in the model is important since zoning is often considered a regressive measure. Thus, the inclusion of two types of residents allows me to study the distributional effects of LUR. In the model, I also include microfoundations of a real estate market, in which developers face zoning and FAR restrictions, and supply residential and commercial floor space. The model allows me to decompose the welfare effect of LUR into four components: changes in housing prices, amenities, wages and the income from land rents.

Together with data and parameter values, this model allows me to recover measures of wages, amenities, productivities and land prices for all locations, and study how regulations affect them. Among other results, I find that more residential zoning and lower FAR limits lead to a decrease in local wages and productivity. However, more residential zoning also leads to a significant increase in local amenities through its effect on the sorting of high-skilled residents.

Counterfactual exercises suggest an important role of changes in the zoning code for improving welfare. In particular, I simulate the effects of two policies, in which I allow an increase of one in the allowed FAR in locations where regulations bind the most or in locations where they bind the least. These simulations show that welfare gains are significantly higher if LUR are relaxed in locations where it is more stringent, but it can increase welfare inequality. These effects are mostly driven by increases in residential market access as higher density is allowed in locations closer to workplaces.

Lastly, note that this paper excludes other possible forces affecting sorting and urban development. For instance, I do not consider a wide range of fiscal issues, such as Tiebout sorting, in which small jurisdictions set their policies strategically (Epple and Sieg, 1999; Parkhomenko, 2020). Moreover, while I have only explored inequality by skill-types, it is worth studying the impact of zoning on racial segregation using these sort of quantitative models. Finally, I do not take into account dynamic considerations, which are important in the study of real estate markets, both in the demand and supply sides (Bayer et al., 2016; Murphy, 2018). All of these issues are left for future research.

References

- 2nd City Zoning (n.d.). Zoning districts. <https://secondcityzoning.org/>.
- Ahlfeldt, G., Redding, S. J., Sturm, D. M., and Wolf, N. (2015). The Economics of Density: Evidence from the Berlin Wall. *Econometrica*, 83(6):2127–2189.
- Allen, T., Arkolakis, C., and Li, X. (2015). Optimal City Structure. Work in progress, Yale University.
- Baum-Snow, N. and Han, L. (2019). The microgeography of housing supply. Work in progress, University of Toronto.
- Baum-Snow, N. and Pavan, R. (2013). Inequality and City Size. *The Review of Economics and Statistics*, 95(5):1535–1548.
- Bayer, P., Ferreira, F., and McMillan, R. (2007). A unified framework for measuring preferences for schools and neighborhoods. *Journal of Political Economy*, 115(4):588–638.
- Bayer, P., McMillan, R., Murphy, A., and Timmins, C. (2016). A dynamic model of demand for houses and neighborhoods. *Econometrica*, 84(3):893–942.
- Brueckner, J. K., Fu, S., Gu, Y., and Zhang, J. (2017). Measuring the stringency of land use regulation: The case of China’s building height limits. *Review of Economics and Statistics*, 99(4):663–677.
- Brueckner, J. K. and Singh, R. (2020). Stringency of land-use regulation: Building heights in us cities. *Journal of Urban Economics*, 116. 103239.
- Cheshire, P. and Sheppard, S. (2002). The welfare economics of land use planning. *Journal of Urban Economics*, 52(2):242–269.
- Ciccone, A. and Peri, G. (2005). Long-run substitutability between more and less educated workers: evidence from US states, 1950–1990. *Review of Economics and Statistics*, 87(4):652–663.
- City of Chicago (2019). Chicago Zoning Ordinance and Land Use Ordinance. <https://codelibrary.amlegal.com/codes/chicago/>.
- CMAP (2016). Chicago Metropolitan Agency for Planning’s 2013 Land Use Inventory for North-eastern Illinois, Version 1.0. <https://www.cmap.illinois.gov/data/land-use/inventory>.
- Conley, T. G. (1999). GMM estimation with cross sectional dependence. *Journal of Econometrics*, 92(1):1–45.
- Davis, M. A., Larson, W. D., Oliner, S. D., and Shui, J. (2019). The Price of Residential Land for Counties, ZIP Codes, and Census Tracts in the United States. FHFA Working Paper 19-01, Federal Housing Finance Agency.
- Diamond, R. (2016). The determinants and welfare implications of US workers’ diverging location choices by skill: 1980-2000. *American Economic Review*, 106(3):479–524.
- Dingel, J. I. and Tintelnot, F. (2021). Spatial Economics for Granular Settings.

- Epple, D. and Sieg, H. (1999). Estimating equilibrium models of local jurisdictions. *Journal of Political Economy*, 107(4):645–681.
- Fischel, W. (2001). *The Homevoter Hypothesis: How Home Values Influence Local Government Taxation, School Finance, and Land-Use Policies*. Harvard University Press.
- Fischel, W. A. (2015). *Zoning Rules!: The Economics of Land Use Regulation*. Lincoln Institute of Land Policy.
- Fujita, M. (1989). *Urban Economic Theory*. Cambridge Books. Cambridge University Press.
- Fujita, M. and Ogawa, H. (1982). Multiple equilibria and structural transition of non-monocentric urban configurations. *Regional science and urban economics*, 12(2):161–196.
- Ganong, P. and Shoag, D. (2017). Why has regional income convergence in the US declined? *Journal of Urban Economics*, 102:76–90.
- Glaeser, E. L., Gyourko, J., and Saks, R. (2005). Why Is Manhattan So Expensive? Regulation and the Rise in Housing Prices. *Journal of Law and Economics*, 48(2):331–69.
- Glaeser, E. L. and Ward, B. A. (2009). The causes and consequences of land use regulation: Evidence from Greater Boston. *Journal of Urban Economics*, 65(3):265–278.
- Greenwood, J., Hercowitz, Z., and Krusell, P. (1997). Long-run implications of investment-specific technological change. *The American Economic Review*, pages 342–362.
- Gyourko, J. and Molloy, R. (2015). Regulation and Housing Supply. In Gilles Duranton, J. H. and Strange, W., editors, *Handbook of Regional and Urban Economics*, volume 5 of *Handbook of Regional and Urban Economics*, chapter 19, pages 1289–1337. Elsevier.
- Helsley, R. W. and Strange, W. C. (1995). Strategic growth controls. *Regional Science and Urban Economics*, 25(4):435–460.
- Hilber, C. A. and Robert-Nicoud, F. (2013). On the origins of land use regulations: Theory and evidence from US metro areas. *Journal of Urban Economics*, 75(C):29–43.
- Hsiang, S. M. (2010). Temperatures and cyclones strongly associated with economic production in the Caribbean and Central America. *Proceedings of the National Academy of Sciences*, 107(35):15367–15372.
- Hsieh, C.-T. and Moretti, E. (2015). Why do cities matter? local growth and aggregate growth. Working Paper 21154, National Bureau of Economic Research.
- Huber, S. and Rust, C. (2016). Calculate travel time and distance with OpenStreetMap data using the Open Source Routing Machine (OSRM). *The Stata Journal*, 16(2):416–423.
- Kahn, M. E., Vaughn, R., and Zasloff, J. (2010). The housing market effects of discrete land use regulations: Evidence from the California coastal boundary zone. *Journal of Housing Economics*, 19(4):269–279.
- Khan, A. R. (2021). Decentralized land-use regulation with agglomeration spillovers: Evidence from aldermanic privilege in chicago.

- Levine, N. (1999). The Effects of Local Growth Controls on Regional Housing Production and Population Redistribution in California. *Urban Studies*, 36(12):2047–2068.
- Mayer, C. J. and Somerville, C. T. (2000). Land use regulation and new construction. *Regional Science and Urban Economics*, 30(6):639–662.
- McMillen, D. P. and McDonald, J. F. (2002). Land Values In A Newly Zoned City. *The Review of Economics and Statistics*, 84(1):62–72.
- Mincer, J. (1974). *Schooling, Experience, and Earnings*. National Bureau of Economic Research.
- Moretti, E. (2013). Real Wage Inequality. *American Economic Journal: Applied Economics*, 5(1):65–103.
- Muehlegger, E. and Shoag, D. (2015). Commuting times and land use regulations. *Procedia Engineering*, 107:488 – 493.
- Murphy, A. (2018). A dynamic model of housing supply. *American Economic Journal: Economic Policy*, 10(4):243–67.
- Muth, R. F. (1969). *Cities and Housing: The Spatial Pattern of Urban Residential Land Use*. University of Chicago Press.
- Notowidigdo, M. J. (2019). The Incidence of Local Labor Demand Shocks. *Journal of Labor Economics*, Forthcoming.
- Parkhomenko, A. (2020). Local causes and aggregate implications of land use regulation. Working paper, University of Southern California.
- Roback, J. (1982). Wages, Rents and the Quality of Life. *Journal of Political Economy*, 90(6):1257–78.
- Rosenthal, S. S. and Strange, W. C. (2004). Evidence on the nature and sources of agglomeration economies. In Henderson, J. V. and Thisse, J. F., editors, *Handbook of Regional and Urban Economics*, volume 4, chapter 49, pages 2119–2171. Elsevier.
- Rossi-Hansberg, E. (2004). Optimal Urban Land Use and Zoning. *Review of Economic Dynamics*, 7(1):69–106.
- Saiz, A. (2010). The geographic determinants of housing supply. *The Quarterly Journal of Economics*, 125(3):1253–1296.
- Saks, R. E. (2008). Job creation and housing construction: Constraints on metropolitan area employment growth. *Journal of Urban Economics*, 64(1):178–195.
- Shertzer, A., Twinam, T., and Walsh, R. P. (2016a). Race, ethnicity, and discriminatory zoning. *American Economic Journal: Applied Economics*, 8(3):217–46.
- Shertzer, A., Twinam, T., and Walsh, R. P. (2018). Zoning and the economic geography of cities. *Journal of Urban Economics*, 105:20–39.
- Shertzer, A., Walsh, R. P., and Logan, J. R. (2016b). Segregation and neighborhood change in northern cities: New historical gis data from 1900–1930. *Historical Methods: A Journal of Quantitative and Interdisciplinary History*, 49(4):187–197.

- Siegan, B. H. (1970). Non-zoning in Houston. *The Journal of Law and Economics*, 13(1):71–147.
- Tsivanidis, N. (2019). The Aggregate and Distributional Effects of Urban Transit Infrastructure: Evidence from Bogotá’s TransMilenio. Work in progress, University of California at Berkeley.
- Turner, M. A., Haughwout, A., and van der Klaauw, W. (2014). Land Use Regulation and Welfare. *Econometrica*, 82(4):1341–1403.
- Wallace, N. E. (1988). The market effects of zoning undeveloped land: Does zoning follow the market? *Journal of Urban Economics*, 23(3):307–326.
- Wheaton, W. C. (1977). Income and urban residence: An analysis of consumer demand for location. *The American Economic Review*, 67(4):620–631.
- Zhou, J., McMillen, D. P., and McDonald, J. F. (2008). Land values and the 1957 comprehensive amendment to the Chicago zoning ordinance. *Urban Studies*, 45(8):1647–1661.
- Zillow (2017). ZTRAX: Zillow Transaction and Assessor Dataset, 2017-Q4.

A Online Appendix - Not for Publication

A.1 Real Estate Prices

I use data of real estate prices and stocks from Zillow Economic Research. The Zillow ZTRAX data sets contains real estate transactions for around 3,000 counties in the United States. These data are constructed from information in local deed transfers and mortgages for mostly residential properties, but also include commercial properties in the more recent years and in larger metropolitan areas.(Zillow, 2017).³⁴ Among other variables, these data include sales price, transaction date and coordinates of the property. I merge this dataset with assessment data collected by Zillow, which include property characteristics, geographic information, current and prior valuations.³⁵

Using the ZTRAX transactions and assessment data, I build quality-adjusted residential and commercial real estate price indices for each census block group in Cook County in the period 2015-2016.³⁶ For the construction of these indices, I drop governmental, institutional, historical, communication, recreational, miscellaneous and transportation properties, group quarters, trailer parks and parking garages. Moreover, I use only arm’s length transactions, drop those with a sales price below 10,000 USD, and drop census block groups with fewer than 4 transactions. After imposing these restrictions, I estimate the following hedonic regression:³⁷

$$\ln(P_{him,T}) = X_{him,T}\beta + \ln(r_{Ti}) + \delta_m + \varepsilon_{him,T},$$

where $\ln(P_{him,T})$ denotes the log sale price of a property h of type T (residential R or commercial F) in a census block group i sold in month m ; $X_{him,T}$ represents a vector of property characteristics; $\ln(r_{Ti})$ denote census block group fixed effects; and δ_m are month of sale fixed effects, which account

³⁴Data provided by Zillow through the Zillow Transaction and Assessment Dataset (ZTRAX). More information on accessing the data can be found at <http://www.zillow.com/ztrax>. The results and opinions are those of the author and do not reflect the position of Zillow Group.

³⁵Baum-Snow and Han (2019) use these data for the whole United States and compare their tract-level price and stock indices with similar measures built using Census data. They find that the correlation between both prices indices is rather low, but generate similar estimates of housing supply elasticities. However, the flow and stock of units generated by both data are quite similar and highly correlated.

³⁶A block group is the US Census classification lying between a tract and a block. There are 809 tracts in Chicago containing on average 2.7 block groups, and there are 2,194 block groups containing on average 17 blocks.

³⁷Alternatively, I could use a repeated sales approach. However, since data for commercial transactions are only available in the latter years (2014 to 2016), it is not possible to compute such an index for commercial real estate.

for the seasonality of the real estate market. The vector of characteristics includes a polynomial of degree two of age and size, and other discrete categories, such as number of rooms, bathrooms, flooring, roofing, fireplace, condition and type of property (e.g., single-detached, townhouse, etc., for residential, or office, retail, industrial, etc., for commercial properties).

The estimated block group fixed effects capture the average quality-adjusted log price of type $T \in \{R, F\}$ in all block groups. The residential price index (r_{Ri}) covers around 97% of all block groups in my sample between 2015-2016, while the commercial price index (r_{Fi}) has a coverage of 43%. To increase coverage, I use an inverse distance weighted interpolation for those block groups with missing price indices. For those blocks where the missing value persists, I use the mean within the block group's census tract. These imputations raise the coverage of the residential and commercial price indices to 99.9% and to 97.5%, respectively. Since these prices are identified up to scale, I normalize their geometric mean to 1.

Figure A1 presents the distribution of real estate prices across block groups in Cook County, and Table A1 presents descriptive statistics for these indices. The most expensive residential real estate in the county in 2015-2016 was found in the blocks surrounding the CBD, as well as the area north of downtown. On the other hand, the cheapest areas are located in the south part of the city and west of downtown. For commercial real estate, the patterns are similar, but less smooth, with high commercial prices in the CBD and along the northern coast. Comparing both indices, I find that the distribution of commercial real estate prices is significantly more skewed, with 5.4% of the block groups having commercial real estate more expensive than any block group's residential real estate.

I also use the assessment data to measure the stock of residential and commercial floor space in each block group as the sum of the built square footage of all properties within type. Figure A2 shows that the block groups with the largest amount of residential space are located downtown and in the suburbs, while the stock of commercial real estate is concentrated downtown, along the main avenues and in the suburbs.

A.2 Land Use Regulations in Chicago

The data on land use and its regulations comes from two sources. First, from the Data Portal of the City of Chicago, which contains a geographic database of all the zoning districts within city boundaries. The zoning data contain coordinates and specific zone class categories for 2016. The detailed specifications of each zone class are available in the Chicago Zoning and Land Use Ordinances (City of Chicago, 2019). In total, there are 66 zone classes, 15 Planned Manufacturing Developments (PMD) and more than a thousand Planned Developments (PD) within the city. An example of zone class is **RS-3**, which corresponds to a detached, single family home in a Residential Single-Unit District, with a maximum FAR of 0.9, a maximum height of 30 feet and a minimum lot size of 2500 square feet, with no commercial activity allowed.

Out of the total land area in Chicago, around 52% is currently categorized as residential (R), while manufacturing (M), commercial (C) and business (B) districts use approximately 11%, 3% and 7%, respectively. Locations categorized as downtown districts (D) use about 1% of the area. Downtown districts can be Residential (DR), Core (DC), Service (DS) or Mixed-Use (DX) districts. PMD and PD cover 6% and 12%, respectively. Weighted by their allowed floor-to-area ratio, these shares correspond to 29% for residential, 15% for manufacturing, 4% for commercial, 9% for business, 6% for downtown, 11% for PMD and 27% for PD. These differences indicate that residential districts have relatively low allowed densities compared to any other district.

I group all districts into three categories: those designated for residential purposes only (R and DR), for commercial only (M, PMD, DS and some C and B) and for mixed-uses (some B, C, DC and DX). I also categorized each Planned Development into a categories based on their characteristics. Planned Developments correspond to tall buildings and other large developments in which developers must work with the City to ensure that the project integrates with surrounding neighborhoods (2nd City Zoning, nd). The City of Chicago keeps pdf files for each Planned Development in <https://gisapps.chicago.gov/gisimages/zoning/pds>. PD range from Airports and Spectator Sports arenas, to mixed-used developments or waterway residential developments. The complete list of types is available on request. In the left panel of Figure 2, I present a map of the city using this categorization. In the right panel, I map the maximum FAR allowed in each zoning

district. In Figure A3, I present a map of the distribution of all nine broad zoning designations.

Using these maps, I build measures of the share of land designated for residential, mixed-uses or commercial purposes, and the average allowed FAR in each block group. I also build a measure of the share of residential space allowed in each block group using the districts’ allowed FAR—as a proxy for the permitted number of floors—together with details inside the Ordinance regarding the number of residential stories allowed. I denote this measure as λ .³⁸ This measure is used calibrating the model as it captures the share of floor space in mixed-use districts that can be used for residential purposes. The coefficient of correlation between this measure and (i) the share of land zoned for residential purposes only is 0.75, (ii) the share of land zoned for commercial uses is -0.89, both significantly different from zero at the 99% confidence level.

A.3 LUR and Wages using the LODES data

The LODES data also contain for each block the number of workers by skill type for three earnings categories: less than \$1250/month, \$1250/month to \$3333/month, and greater than \$3333/month. I define as high-wage those workers within the top category and calculate the share of low- and high-wage workers by skill.³⁹ Under this definition, approximately 37% of workers in Cook county are in the high-skilled high-wage category, while 25% are in the low-skilled low-wage category. Table A3 presents these shares.

Using these categories, I investigate the effect of current LUR on the distribution of wages for both types of workers by estimating the following regressions:

$$ShLowWage_{e,i} = \beta_3 LUR_{2016,i} + \psi_3 X_i + \varepsilon_{3,i}, \quad (24)$$

where $ShLowWage_{e,i}$ denotes the share of low wage workers from skill type e in block group i .

³⁸For example, **B3-3** zoning districts have an allowed FAR of 3, with apartments only permitted above the ground floor. In this case, I assume that the first floor is used for commercial purposes, while the two remaining floors are used for residential purposes. Hence, I set $\lambda = 2/3$. Moreover, $\lambda = 1$ for residential-only districts, and $\lambda = 0$ for commercial-only districts. For Planned Developments, I assumed $\lambda = 0.8$ for those categorized as mixed-used.

³⁹According to the American Community Survey (ACS), out of the full-time year-round workers with positive earnings in Cook County, approximately 4.7% makes less than \$1250 each month, 34.5% earns between \$1251 and \$3333, and 60.8% makes more than \$3333 a month.

Columns (1) and (2) from Table A5 presents the results of these regressions for low- and high-skilled workers, respectively.

Results from Panel A suggest that block groups with a higher share of area zoned for residential or mixed-uses have a higher share of low-wage workers, both low- and high-skilled. In particular, a 10pp increase in the share of residential zoning leads to an increase in the share of low-wage workers of 2.3% for low-skilled, and 5.8% for high-skilled. For a 10pp increase in the share of mixed-use land, the shares increase by 1.6% and 3.9%, respectively. Similarly, results from Panel B suggest that tighter FAR limits lead to a higher share of low-wage workers: a 8% increase for low-skilled and an 18% increase for high-skilled workers, after a one-unit decrease in the allowed FAR.

A.4 Extra Tables and Figures

Table A1: Real Estate Hedonic Price Indices, 2015-2016

	(1)	(2)	(3)
	Residential	Commercial	Ratio R/C
N. Block Groups	3,985	3,890	3,889
Mean	1.36	2.41	1.49
Std. Dev.	1.12	5.07	3.57
Min	0.09	0.00	0.01
Median	1.09	1.01	0.95
Max	12.97	87.79	117.5
Corr with Res HI	1.0	0.41	
Corr with Com HI	0.41	1.0	

Notes: This table shows descriptive statistics for the residential and commercial hedonic price indices, and for the ratio between between them. These prices are estimated using a hedonic regression approach for both types of properties, separately, and an inverse distance weighted interpolation for those locations without enough observations. Price indices are normalized to a geometric mean of 1.

Table A2: Average and Median Block Group, 2015-2016

		By Block of Residence				
		Total 30+	<HS	HS	Some Coll	>College
County	Mean	416.3	58.0	96.6	123.6	138.2
	Median	373	51.5	87.5	111.5	117
	Total	1.66m	231k	385k	493k	551k
City	Mean	368.1	57.2	86.1	108.6	116.1
	Median	332	50.5	79.5	98	89.5
	Total	806k	125k	189k	238k	254k
		By Block of Work				
		Total 30+	<HS	HS	Some Coll	>College
County	Mean	466.2	60.4	106.1	138.1	161.6
	Median	89.5	14.5	23	27	24.5
	Total	1.86m	241k	423k	551k	645k
City	Mean	463.4	60.2	102.0	135.3	165.9
	Median	66	12	17	19.5	16.5
	Total	1.02m	132k	224k	296k	363k

Notes: This table shows the number of people by education level in the mean and median block group, by both residential and workplace block groups, in both Cook County and the City of Chicago. Educational attainment categories respectively correspond to less than high school, high school or equivalent, some college or associate degree, bachelor's degree or advanced degree.

Table A3: Distribution of Workers by Earnings and Skill, 2015-2016

Earnings	Education	Mean Shares, Block of	
		Residence	Work
Low	Low	23.43%	30.86%
High	Low	15.62%	10.64%
Low	High	23.70%	32.56%
High	High	37.25%	23.59%

Notes: This table shows the distribution of workers by earnings and skills in the average block group of residence and of work in 2015-2016 given by the LODES data for Cook County.

Table A4: OLS Regressions

Type	(1)		(2)		(3)		(4)		(5)		(6)		(7)		(8)		(9)		(10)		(11)		(12)		
	Ln Price	Ln Stock	Ln Price	Ln Stock	Ln Price	Ln Stock	Ln Price	Ln Stock	Sh. High Skilled (w)	Sh. High Skilled (a)	Sh. High Skilled (w)	Sh. High Skilled (a)	Sh. High Skilled (w)	Sh. High Skilled (a)	Sh. Low Skilled (w)	Sh. Low Skilled (a)	Sh. Low Skilled (w)	Sh. Low Skilled (a)	Sh. High Skilled (w)	Sh. High Skilled (a)	Sh. Low Skilled (w)	Sh. Low Skilled (a)	High Sk Work	High Sk Work	
Panel A																									
Sh. Res. Only	0.01 (0.08)	1.75*** (0.48)	-0.32 (0.20)	-2.60*** (0.59)	0.00 (0.02)	0.74*** (0.13)	0.75*** (0.13)	0.75*** (0.13)	0.00 (0.02)	0.01*** (0.00)	0.01* (0.00)	0.01* (0.00)	0.01* (0.00)	0.01* (0.00)	0.01* (0.00)	0.01* (0.00)	0.01* (0.00)	0.01* (0.00)	0.01* (0.00)	0.01* (0.00)	0.01* (0.00)	0.01* (0.00)	0.01* (0.00)	0.01* (0.00)	0.01* (0.00)
Sh. Mixed-uses	0.01 (0.10)	1.58*** (0.44)	-0.48* (0.29)	5.28*** (0.90)	-0.01 (0.02)	0.64*** (0.12)	0.62*** (0.13)	0.62*** (0.13)	-0.01 (0.02)	-0.01 (0.02)	-0.07 (0.04)	-0.07 (0.04)	-0.07 (0.04)	-0.07 (0.04)	-0.07 (0.04)	-0.07 (0.04)	-0.07 (0.04)	-0.07 (0.04)	-0.07 (0.04)	-0.07 (0.04)	-0.07 (0.04)	-0.07 (0.04)	-0.07 (0.04)	-0.07 (0.04)	-0.07 (0.04)
R-squared	0.89	1.00	0.55	0.95	0.99	0.99	0.99	0.99	0.99	0.99	0.99	0.99	0.99	0.99	0.99	0.99	0.99	0.99	0.99	0.99	0.99	0.99	0.99	0.99	
Panel B																									
Mean FAR	0.03** (0.01)	0.14*** (0.05)	0.04 (0.04)	0.14 (0.14)	0.01*** (0.00)	-0.00 (0.02)	0.02 (0.02)	0.02 (0.02)	0.01*** (0.00)	0.01*** (0.00)	0.01* (0.00)	0.01* (0.00)	0.01* (0.00)	0.01* (0.00)	0.01* (0.00)	0.01* (0.00)	0.01* (0.00)	0.01* (0.00)	0.01* (0.00)	0.01* (0.00)	0.01* (0.00)	0.01* (0.00)	0.01* (0.00)	0.01* (0.00)	
R-squared	0.89	0.99	0.55	0.95	0.98	0.99	0.99	0.99	0.98	0.98	0.90	0.90	0.90	0.90	0.90	0.90	0.90	0.90	0.90	0.90	0.90	0.90	0.90	0.90	
Observations	1,391	1,392	1,345	1,392	1,394	1,394	1,392	1,394	1,394	1,394	1,385	1,385	1,385	1,385	1,385	1,394	1,394	1,394	1,394	1,394	1,385	1,385	1,385	1,385	

Notes: This table shows the results of OLS regressions of different zoning measures on prices and stock in the real estate market (Columns 1-4), on different outcomes regarding the spatial distribution of high- and low-skilled workers within and across block groups of residence (Columns 1-3) and work (4-6), on the log share of low wage workers in both skill categories. The regressions include as control variables the block group's land area, distance to the CBD, to major waterways and transit access, current racial composition. Price measures are quality adjusted (hedonic) and are defined in Section 2.1. Dependent variables are in logs; (w) denotes the share within blocks (e.g., high-skilled as proportion to the block's population); (a) denotes the share across blocks (e.g., high-skilled in a block as proportion of city's total high-skilled). Spatial Heteroscedasticity and Autocorrelation Consistent (SHAC) standard errors in parentheses (Conley, 1999); *** p<0.01, ** p<0.05, * p. <0.1.

Table A5: Effects of LUR on Wages

Skill Cat.	(1)	(2)
	Sh. Low Wage Low	Sh. High Wage High
Panel A		
Sh. Res. Only	0.23*** (0.00)	0.56*** (0.00)
Sh. Mixed-uses	0.16*** (0.00)	0.38*** (0.00)
F-Test	11.05	11.14
Panel B		
Mean FAR	-0.08*** (0.00)	-0.18*** (0.00)
F-Test	19.60	20.64
Observations	1,385	1,385

Notes: This table shows the results of 2SLS regressions of the effects of different LUR measures on the log share of low wage workers by skill type using wage categories from the LODES data. The estimations use the 1923 zoning ordinance as instrument and include controls for block group's land area, distance to the CBD and to major waterways, transit access, current racial composition, and historical covariates. Spatial Heteroscedasticity and Autocorrelation Consistent standard errors in parentheses (Conley, 1999); ** p<0.05, * p. <0.1.

Table A6: Parameters

Parameter	Value	Description	Source
<i>I. Workers</i>			
β_u	0.360	Housing Expenditure Share Low-Skilled	ACS, 2015
β_s	0.268	Housing Expenditure Share High-Skilled	ACS, 2015
κ	0.01	Size of Commuting Costs	Ahlfeldt et al. (2015)
θ_u	1.720	Frechet Shape Parameter Low-Skilled	Gravity Estimation, κ
θ_s	1.811	Frechet Shape Parameter High-Skilled	Gravity Estimation, κ
η_u	2.959	Frechet Shape Parameter Low-Skilled	Tsivanidis (2019)
η_s	3.329	Frechet Shape Parameter High-Skilled	Tsivanidis (2019)
\tilde{T}_u	1.0	Frechet Scale Parameter Low-Skilled	Normalization
\tilde{T}_s	1.642	Frechet Scale Parameter High-Skilled	Calibrated with wage skill premium Cook County
<i>II. Firms</i>			
$1 - \alpha$	0.156	Share of Land in Production	Tsivanidis (2019); Greenwood et al. (1997).
α_u	$\alpha - \alpha_s$	Share of Low-Skilled Labor in Total Labor	
ρ	0.33	Elasticity of Substitution, High- and Low-Skilled ($1/1 - \rho$)	Ciccone and Peri (2005), Card (2009).
<i>III. Real Estate</i>			
μ	0.266	Share of Land in Real Estate Production	Davis et al. (2019), avg for Cook Cty.
<i>IV. Externalities</i>			
σ	0	Importance of Density in Amenities	Khan (2021)
ϱ	0	Spatial Decay of Amenities	Khan (2021)
δ	0	Importance of Density in Productivity	Khan (2021)
ν	0	Spatial Decay of Productivity	Khan (2021)

Notes: This table shows the value of the parameters, their economic interpretation and their source.

Table A7: Descriptive Statistics - Recovered Variables

	Skill	Mean	SD	Min	p50	Max
Residential MA	Low	6,319.8	1,134.2	3,017.5	6,354.4	17,141.6
Firm MA	Low	39.35	5.77	20.60	40.41	125.59
Wages	Low	1.05	0.46	0.00	0.99	5.15
Amenities	Low	1.05	0.32	0.00	1.06	2.44
Residential MA	High	8,566.8	1,603.5	4,117.4	8,629.9	21,861.7
Firm MA	High	54.14	7.43	29.60	54.98	178.4
Wages	High	1.08	0.53	0.00	0.99	6.83
Amenities	High	1.05	0.33	0.00	1.06	2.36
Productivity		10.37	4.56	0.00	9.69	56.07
Land Prices		3,152.4	23,652	0.00	1719.4	1.44m
Shadow Price		2,586.4	13,208	-2.68	1960.2	0.65m

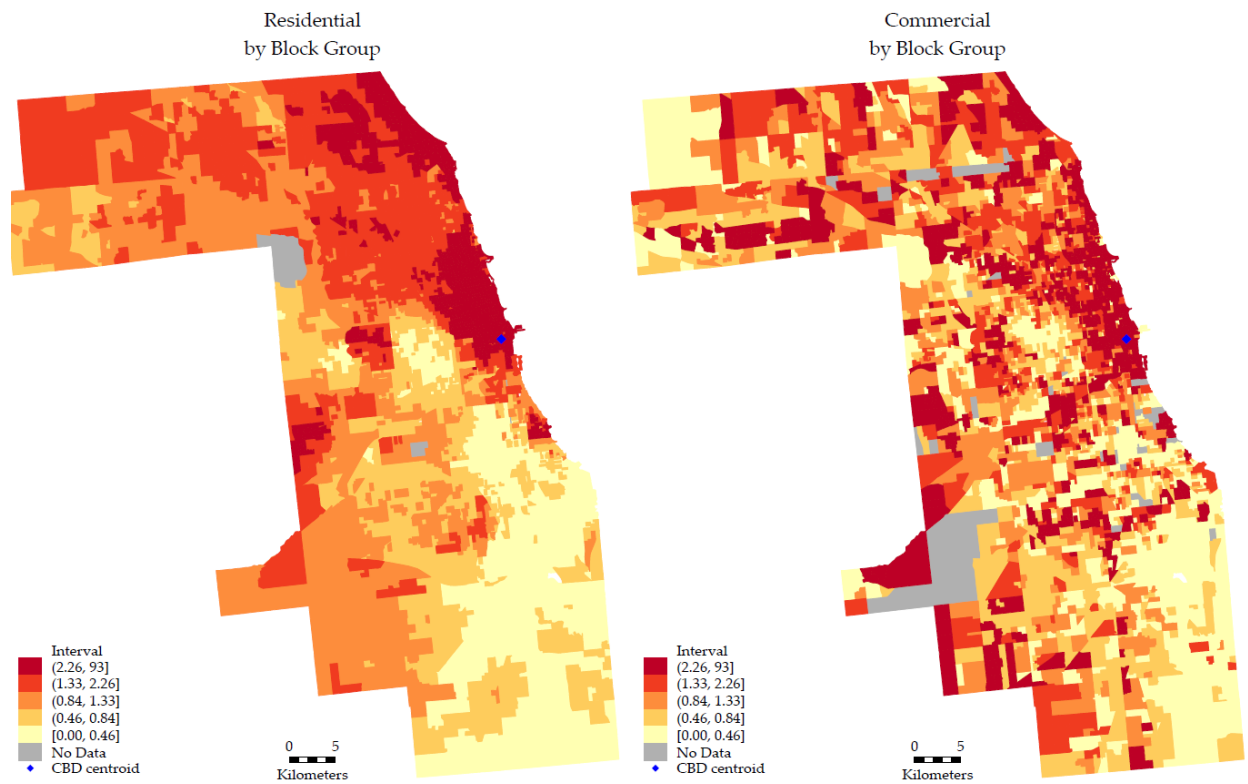
Notes: This table shows descriptive statistics for different variables recovered from the quantitative model using the calibration procedure from Section 5. *m* indicates millions (1e06).

Table A8: Expected Utility in the City

	(1)	(2)
Welfare Low-Skilled	277.82	178.17
Welfare High-Skilled	290.53	182.38
Relative Welfare	1.046	1.024
Income from Land	YES	NO

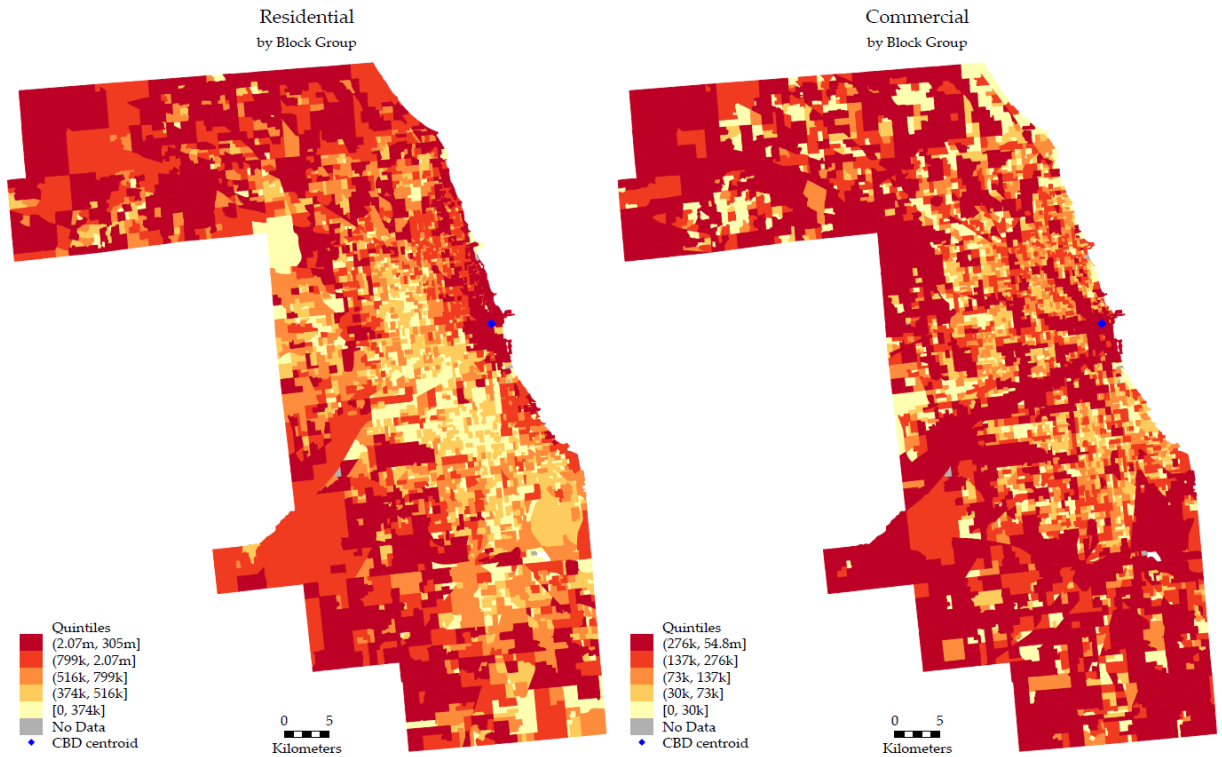
Notes: This table shows the expected utility by skill type in Cook County recovered from the quantitative model from Section 5. Column (1) shows the total expected utility, while Column (2) assumes that residents do not receive any transfer from the rents of land.

Figure A1: Real Estate Hedonic Prices in Cook County, 2015-2016



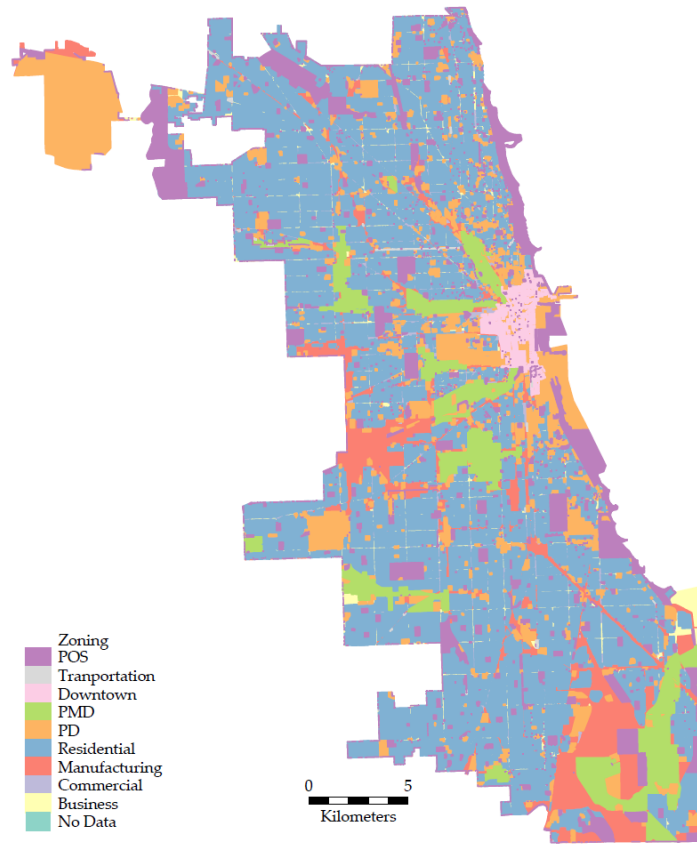
Notes: This figure shows the residential (left) and commercial (right) real estate price indices for every block group in Cook County for the period 2015-2016. These prices are estimated using a hedonic regression approach for both types of properties, separately, and an inverse distance weighted interpolation for those locations without enough observations. Price indices are normalized to a geometric mean or 1. Blue dot represents Chicago's CBD.

Figure A2: Total Built Square Footage—Cook County, 2015-2016



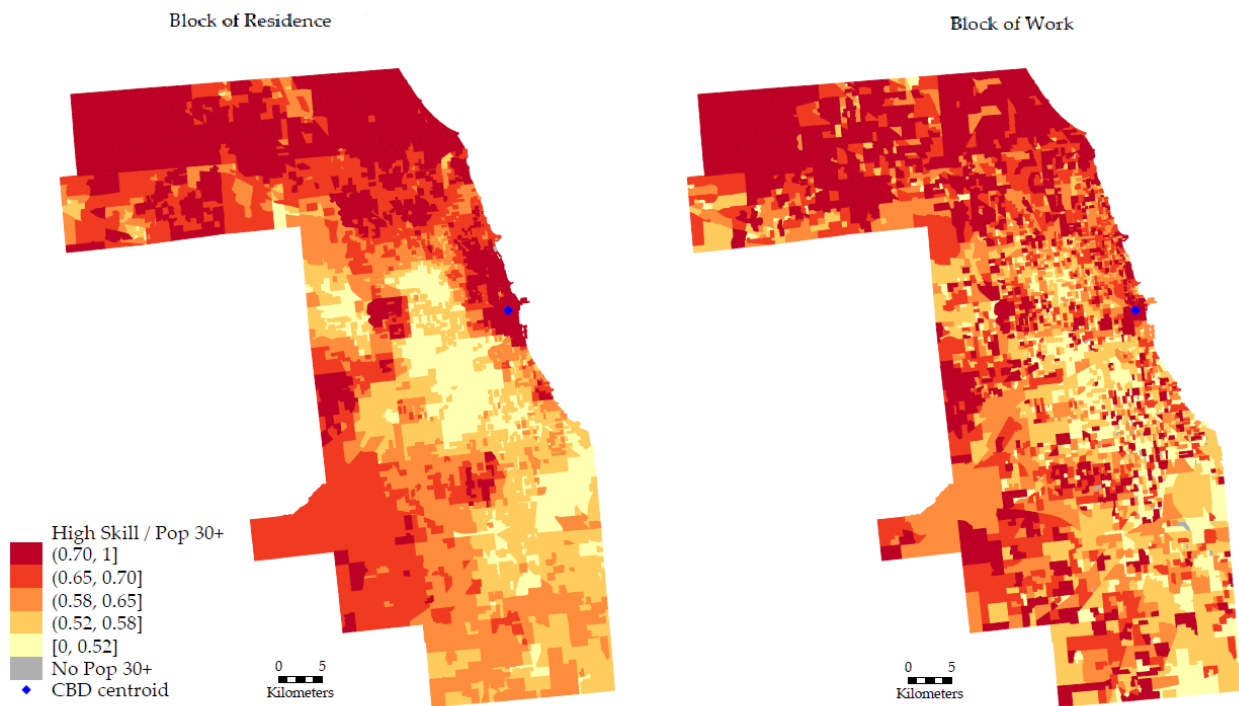
This figure shows the total stock of residential (left) and commercial (right) real estate for every block group in Cook County for the period 2015-2016. The stock is computed as the sum of the built square footage of all properties within type. Blue dot represents Chicago's CBD.

Figure A3: Broad Zoning Designations, 2016



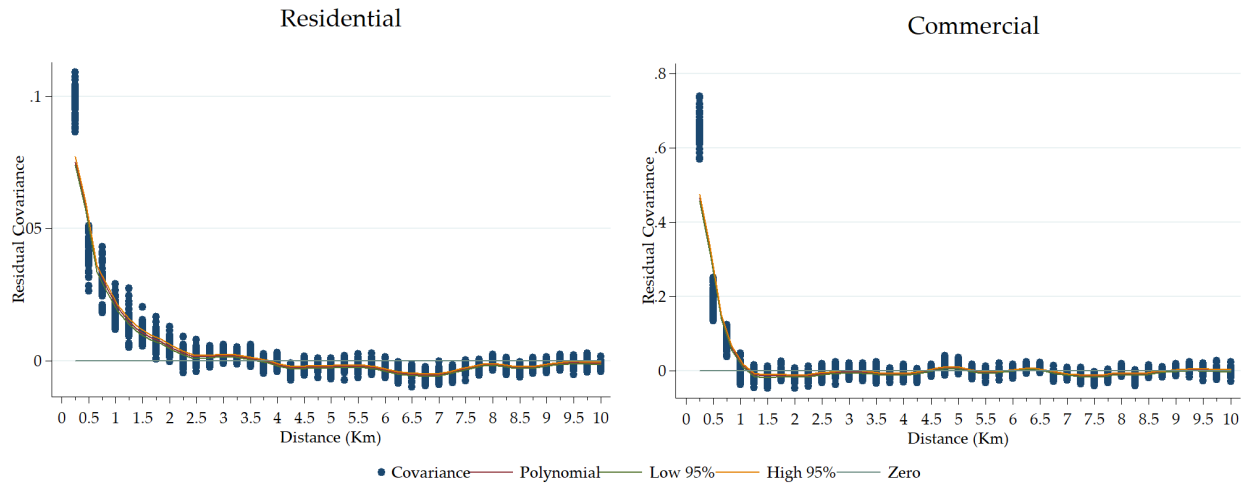
Notes: This figure shows the distribution of the nine zoning classes in the City of Chicago as indicated by the 2016 Zoning Ordinance. POS denotes Parks and Open Spaces. PMD denotes Planned Manufacturing Districts. PD denote Planned Developments.

Figure A4: Distribution of Skills–Cook County, 2015-2016



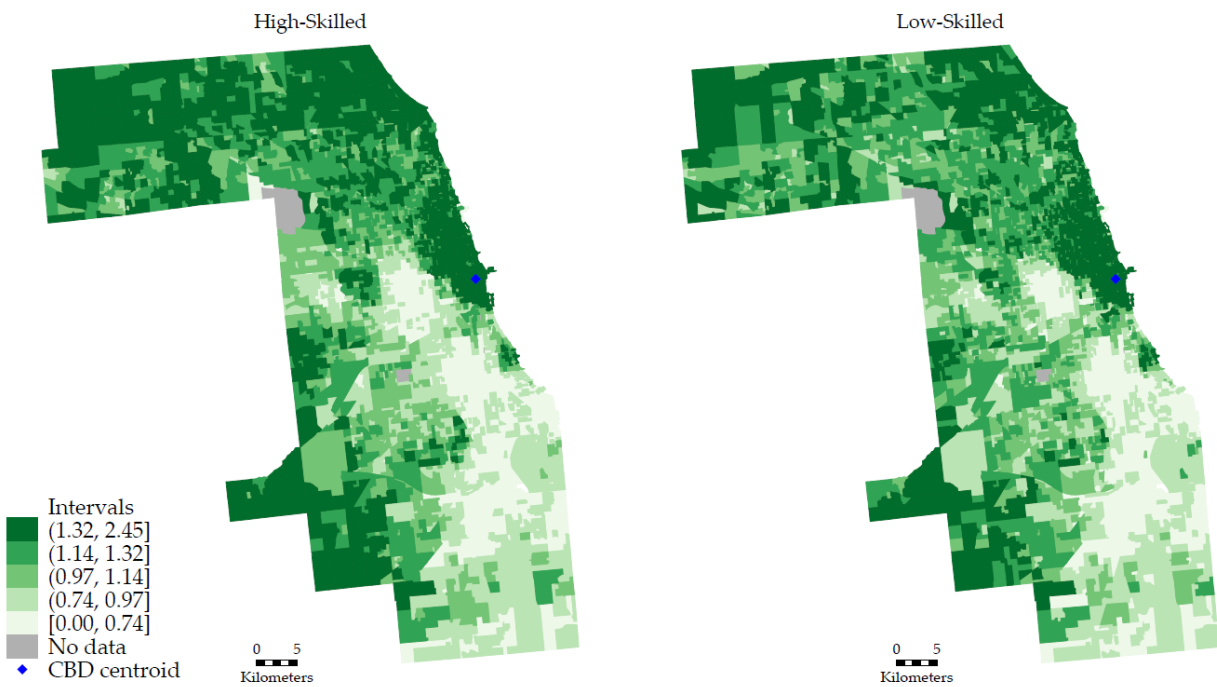
Notes: The left figure shows the share of high-skilled residents for every block group in Cook County in 2015-2016. The right figure shows the share of high-skilled workers for every block group in Cook County in 2015-2016. Blue dot represents Chicago's CBD.

Figure A5: Spatial Correlation of Real Estate Prices



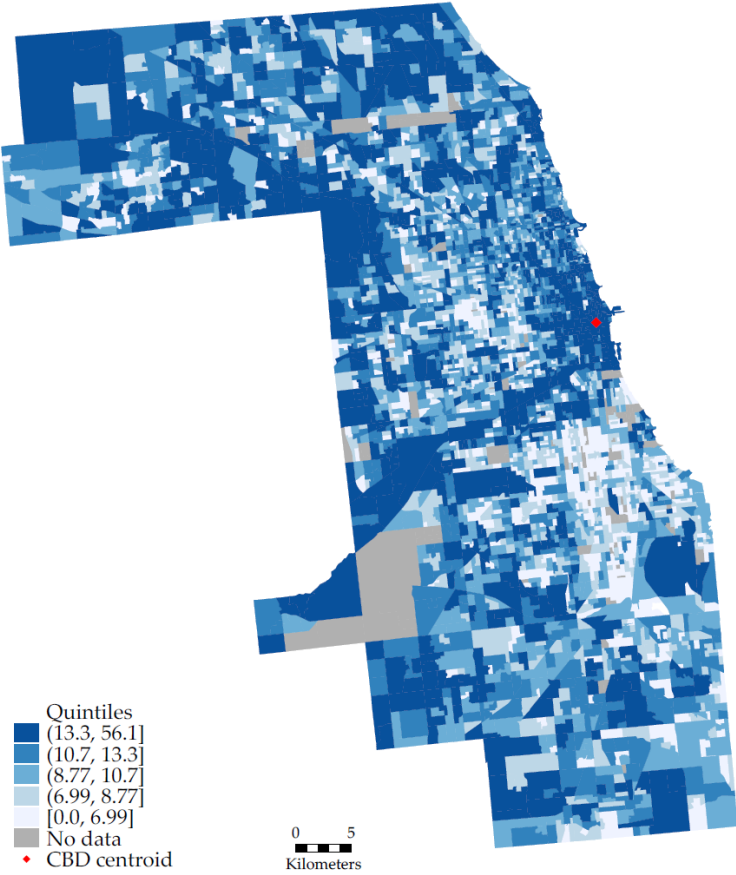
Notes: This figure shows the residual covariance of real estate prices across block groups as a function of their bilateral distance in kilometers. I use residential real estate prices in the left panel and commercial real estate prices in the right panel. This residual covariance is obtained by bootstrapping the spatial correlation between residual real estate prices from regressions of real estate prices on land use regulations, including controls for block group’s land area, distance to the CBD and to major waterways, transit access, and historical covariates. Price measures are quality adjusted (hedonic).

Figure A6: Amenities in Cook County, 2015-2016



Notes: This figure shows local residential amenities by skill type for every block group in Cook County for the period 2015-2016. Both variables are recovered using the quantitative model. Blue dot represents Chicago's CBD.

Figure A7: Productivity in Cook County, 2015-2016



Notes: This figure shows local productivity for every block group in Cook County for the period 2015-2016. Productivity is recovered using the quantitative model. Red dot represents Chicago's CBD.